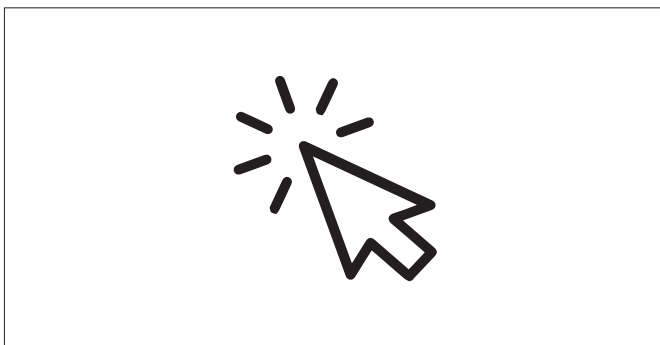


GEBERIT PROPLANNER LATEST FUNCTIONS & IMPROVED FEATURES OCTOBER 2025

A maintenance update for the Geberit ProPlanner is now available for download. Users will be notified by a pop-up message directly in the software that a new version is available.

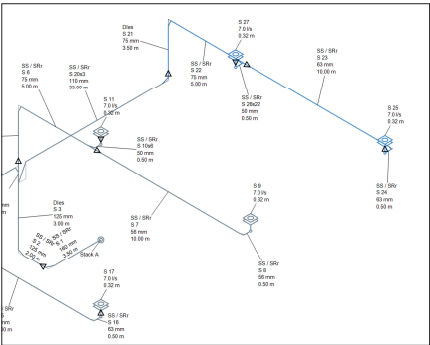
GENERAL MODULE HIGHLIGHTS

ONE-CLICK EXPORT OF SEPERATE PDF OR EXCEL FILE



Project lists can now be exported as individual documents with a single click. This removes time-consuming manual steps and speeds up the delivery of client-ready lists.

INCREASED USER FLEXIBILITY



Material lists can now be generated for specific sections only, supporting renovation projects where only parts of the installation need to be added.

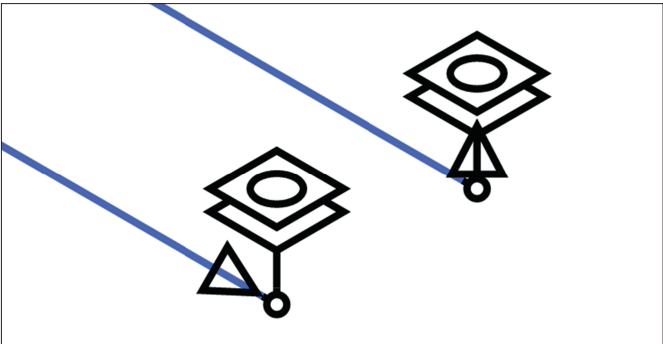
Project number: RDS 2021Page 1 / 2
Project name: Sample Solution Roof Drainage Systems (AU)
Project description:
Person responsible:
Date: 9/29/2025 12:16:26 PM

■ GEBERIT

Material list (Subsystem calculation)Roof drainage systems

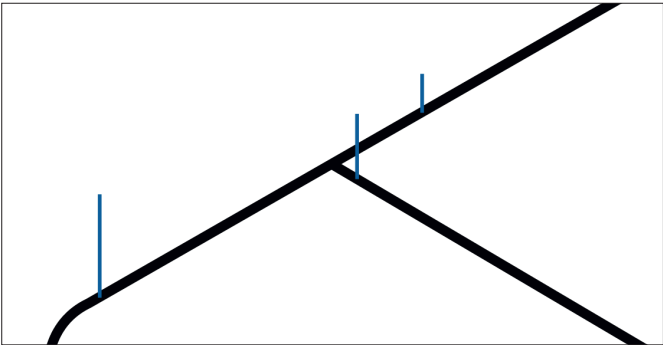
Quantity	Art. no.	Article designation
Roof outlets		
5 pcs	359.111.00.1	Fluxia gutter outlet 12L/s
Pipes		
9.0 m	361.000.16.0	HDPE pipe dia. 60mm
23.8 m	363.000.16.0	HDPE pipe dia. 56mm
9.0 m	364.000.16.0	HDPE pipe dia. 63mm (lengthen)
12.0 m	365.000.16.0	HDPE pipe dia. 76mm (lengthen)

FLEXIBLE PLACEMENT OF PUPE REDUCTION



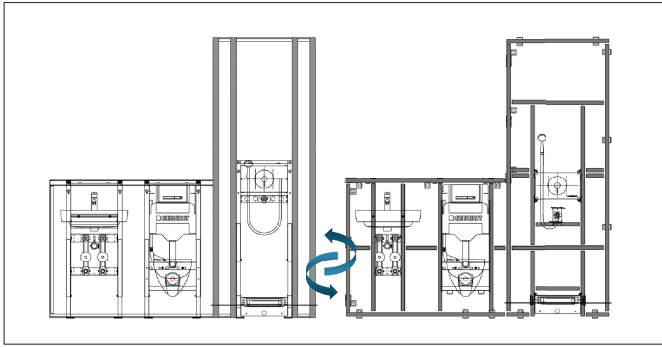
Reductions can be positioned directly after an outlet on vertical or horizontal pipes. This increases accuracy in material lists and reduces manual adjustments in space-constrained layouts.

MORE PRECISE FASTENING MATERAIL LISTS WITH BUILDINGS STRUCTURE DISTANCES



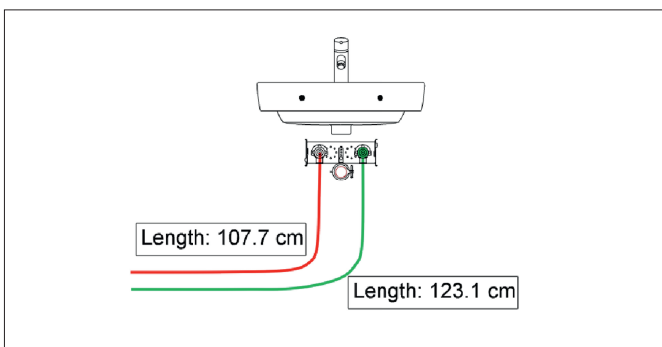
By defining structure distances on a pipe level, fastening material lists become more accurate. Threaded rod calculations and cutting lengths are optimized, leading to more efficient planning.

SWITCH BETWEEN GEBERIT GIS AND GEBERIT DUOFIX WALLS WITH ONE CLICK



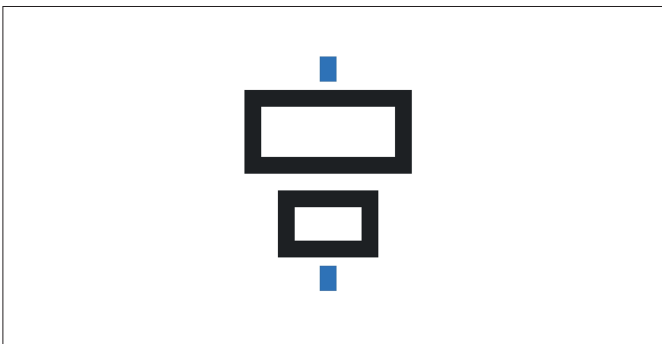
Walls can be changed between GIS and Duofix without redrawing, saving time and increasing flexibility in projects.

DIMENSION SPLINES IN ELEVATIONS



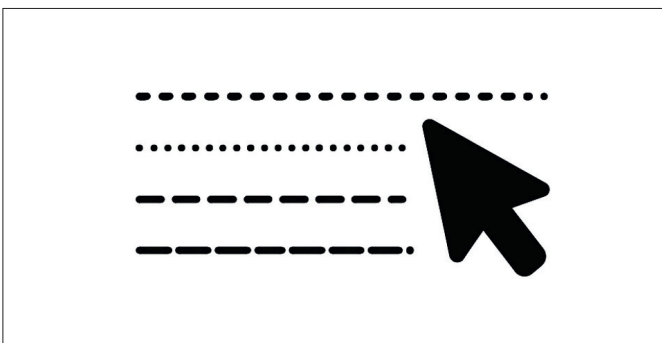
Splines representing bendable pipes can now be dimensioned in 2D elevation drawings, improving workflow efficiency.

ALIGN TOOL FOR WALL LAYOUTS



Objects can now be aligned along the same axis. This reduces manual adjustments and improves accuracy in wall layouts.

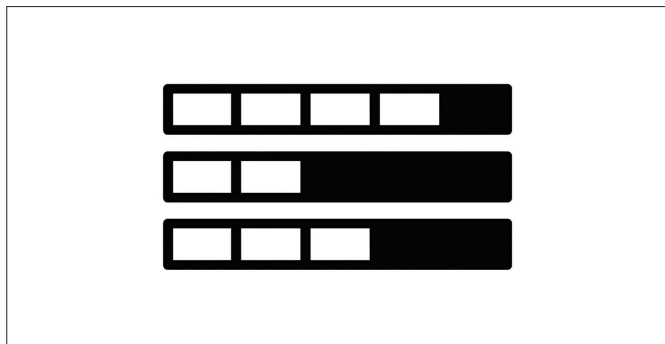
EXTENDED TYPES FOR PRIMITIVE LINES AND SHAPES



New line types are available across Detail Planning 3D and Schematic Planning. This expands options for labels, notes, and highlights in project plans.

WASTER WATER PREFABRICATION

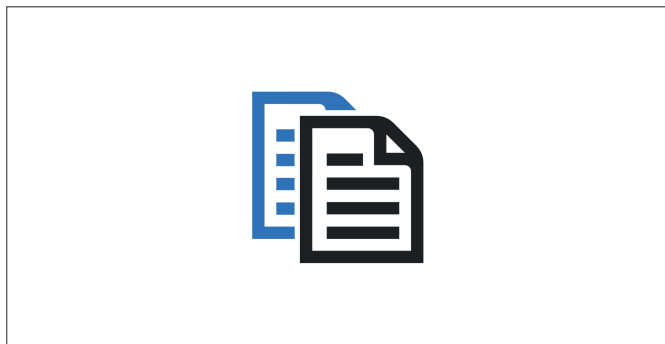
GRAPHICAL CUTTING LIST INTEGRATED INTO BILL OF MATERIAL



Cutting lists for wastewater pipes are now shown graphically and included in the Bill of Materials. This supports efficient material usage, reduces costs, and minimizes waste.

INSTALLATION SYSTEMS

MULTISELECT COPY/PASTE BETWEEN PROJECTS



Multiple items and positions can now be copied and pasted between projects or sub-projects. This speeds up workflows and improves project organization.

Find the list of all new product which have been added and can be found in the catalogue in ProPlanner

- **Geberit GIS set washbasin with 1 water meter**
- **Introduction of new Geberit Renova S, M & L**