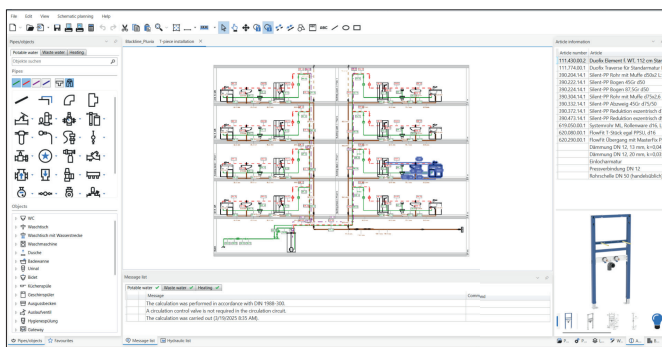


# GEBERIT PROPLANNER NEW FEATURES AND NEW PRODUCTS APRIL 2025

A maintenance update for the Geberit ProPlanner is now available for download. Users will be notified by a pop-up message directly in the software that a new version is available.

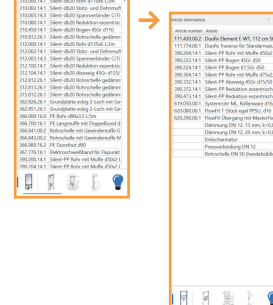
## GENERAL

### SIMPLE AND EFFICIENT IDENTIFICATION OF SPECIFIC PRODUCTS



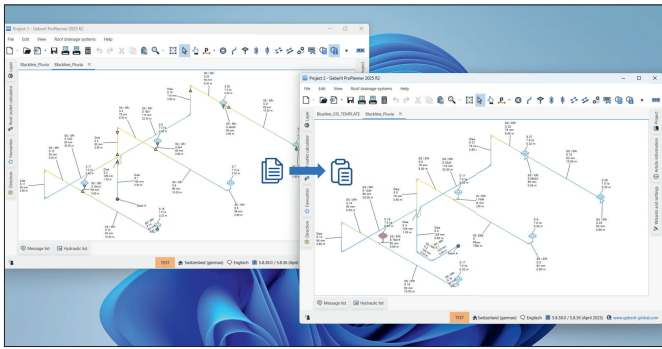
By automatically filtering the Article Information list according to selected elements in the design, the user can have a quick overview of which products are being used in a specific section and have direct access to the relevant information (to be implemented in all modules)

Long list of all items in a complex building



Now filtered, and the items list is showing the selected part of the design only

## INCREASED USER FLEXIBILITY



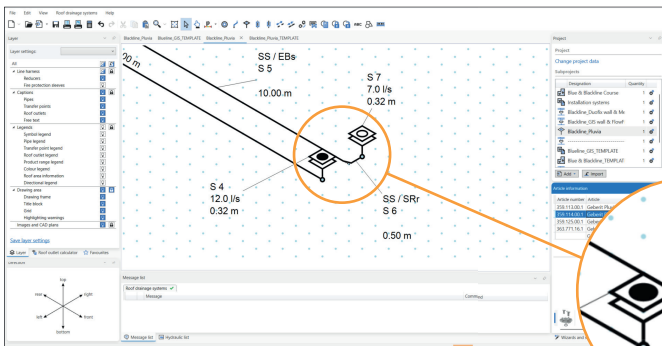
In the new release, users can work with two windows simultaneously, making it easier to switch between two instances.

This helps you to work on two projects or subprojects the same time or to copy information and parts from one to the other instance.

*The Copy-Paste function is available in the following modules: Installation system; 3D Detailed planning and Roof drainage systems.*

## ROOF DRAINAGE

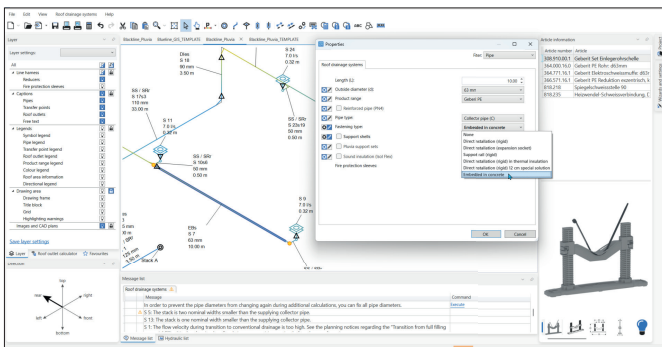
### EASY IDENTIFICATION OF GEBERIT PLUVIA EMERGENCY OUTLETS



The clear, visual cues make it simpler for users to locate and plan for emergency outlets, improving safety and reducing the risk of errors during planning process.

The emergency outlet has a black filled region in the middle and the standard outlets have an empty circle.

### PLAN THE PIPE FASTENING FOR CAST-IN INSTALLATION



While planning the pipe system for the Geberit Pluvia roof drainage and when the pipe will be casted in concrete, planners can now also add the new Geberit Cast-in concrete brackets in the schematic planning module.

According to the planning rules, the necessary number of brackets and the right position along the pipes will be displayed separately on the material list.

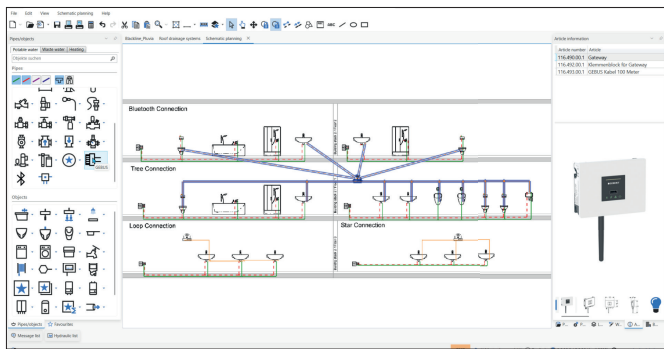
### PLAN THE NEW GEBERIT CAST-IN CONCRETE BRACKETS



Planning a drainage system with the horizontal connection pipes in concrete floor, planners can now integrate the new Geberit cast-in-concrete brackets directly within the schematic planning module.

According to the planning rules, the necessary number of brackets and the right position along the pipes will be displayed separately on the material list.

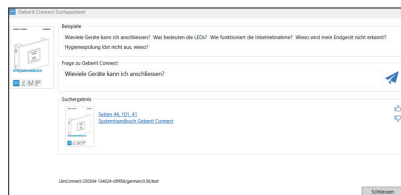
### PLANNING THE GEBERIT CONNECT SYSTEM IN PROPLANNER



With Geberit Connect, several sanitary flushes and devices in the building can be networked and operated from a central location with less effort.

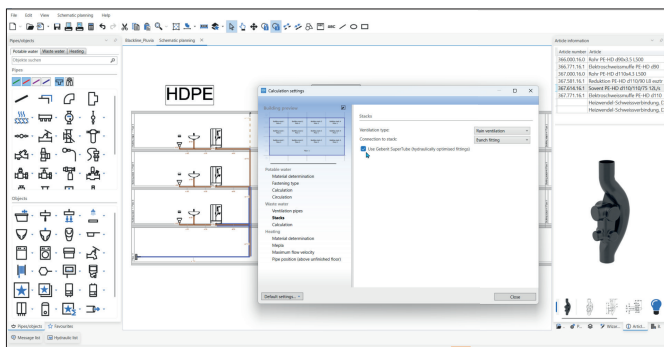
In the new ProPlanner release, planners can now seamlessly plan and calculate the material for their Geberit Connect system.

The material list will have the complete list of necessary items for Geberit Connect including the required GEBUS cable length for the planned system.



In addition, it allows a fast and intuitive search within the Geberit Connect Search Assistant, powered by Artificial Intelligence. (Available in German language)

### EASILY UPGRADE YOUR PLANNING TO A HYDRAULIC OPTIMIZED DRAINAGE SYSTEM

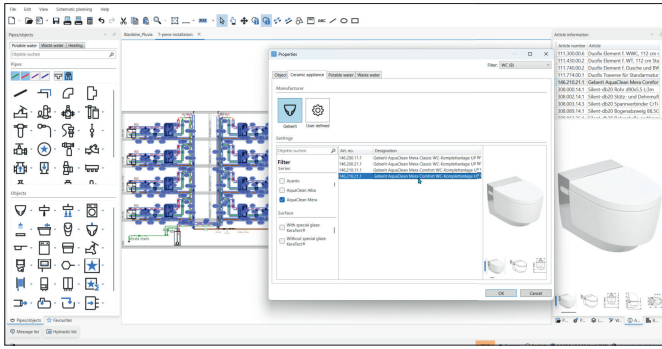


Drainage systems planned with Standard fittings can be automatically upgraded to use Geberit SuperTube hydraulically optimized fittings. ProPlanner replaces the branch fittings and bends to the Geberit SuperTube fitting according to the planning rules for Geberit SuperTube.

This applies to the drainage systems Geberit PE and Geberit Silent-db20, as well as to Geberit Silent-Pro.

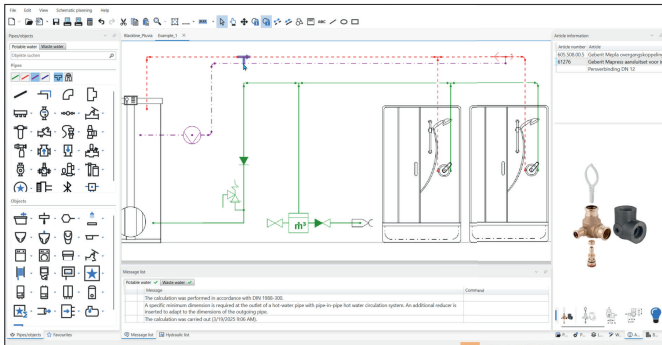


## SAVE TIME IN DEFINING A SPECIFIC CERAMIC FOR MULTIPLE SELECTION



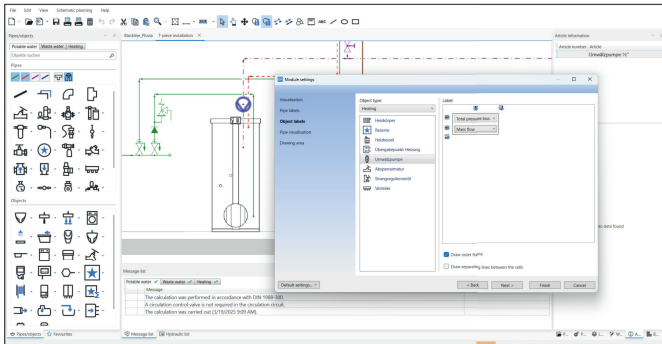
Instead of configuring the ceramic for each item individually, users can apply it to multiple selections at once, simplifying the process. This enhances efficiency, minimizes repetitive tasks, and enables faster completion of work.

## MORE ACCURATE MATERIAL LIST



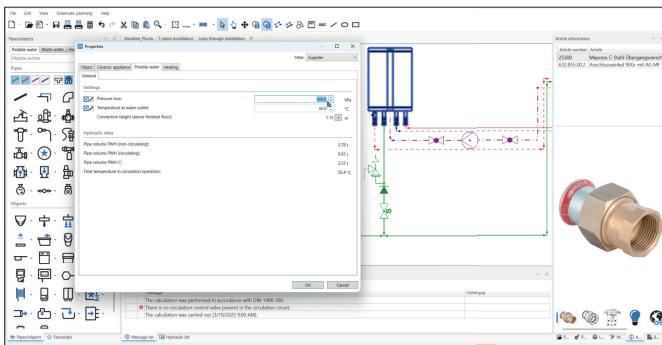
The new release also allows to place the Geberit Pipe-in-Pipe hot water circulation system in horizontal pipes, providing greater flexibility for planners and improving planning accuracy and system efficiency.

## ADD TECHNICAL INFORMATION FOR HEATING PUMPS



Users can now easily access critical data, such as Total pressure loss and Mass flow directly from the labels. This enhances clarity, reduces the need for manual reference, and ensures accurate and efficient decision-making during installation.

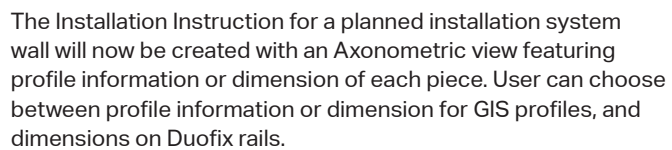
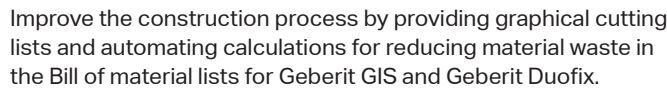
## CALCULATE PRESSURE LOSSES IN THE SYSTEM



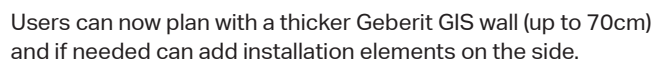
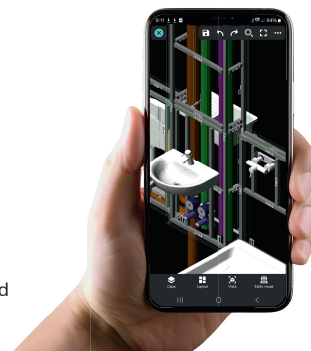
By defining the pressure loss values for specific elements such as the freshwater station, water heater, and/or radiator, the system can more accurately calculate the pressure loss across the entire piping system.

This ensures more accurate planning and improved management of water flow throughout the system.



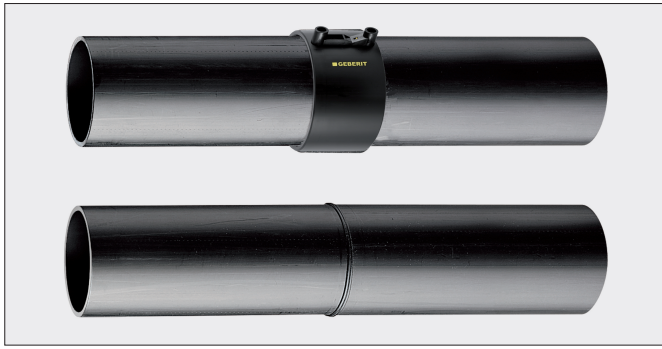


In addition, the installer can view the real-time location and planning details of each profile directly on their tablet or cellphone by the use of any standard 3D viewer.[MM1] Makes it even easier for installation and provides a smoother workflow.



© by Geberit XY / Street / City / [www.geberit.xy](http://www.geberit.xy) / Tel: +00 000 0000 00 00

## BETTER PLANNING AND COST ESTIMATION



The ability to distinguish between different types of welded connections in drainage pipes, along with detailed material lists, enables more accurate cost estimations and better project planning.

Possible to clarify between mirror weld seams or with Geberit electrofusion coupling.

## NEW PRODUCTS ADDED

---

Find the list of all new product which have been added and can be found in the catalogue in ProPlanner

- **The new Geberit Duofix 2025;** The complete assortment of the Geberit Duofix is now available in ProPlanner
- **Geberit GIS mounting plate**
- **New Geberit CleanLine shower channels:** In different length Stainless steel brushed and black chrome
- **Urinal division black; glass gray and glass white**
- **Geberit Type 383 filling valve for concealed cistern**
- **The new naming and new Urinal controls**
- **The new naming and new Geberit Actuator plates Sigma40 and Sigma01**
- **The Geberit cast-in concrete bracket**
- **New Geberit FlowFit fittings**
- **Geberit Mapress Therm assortment**