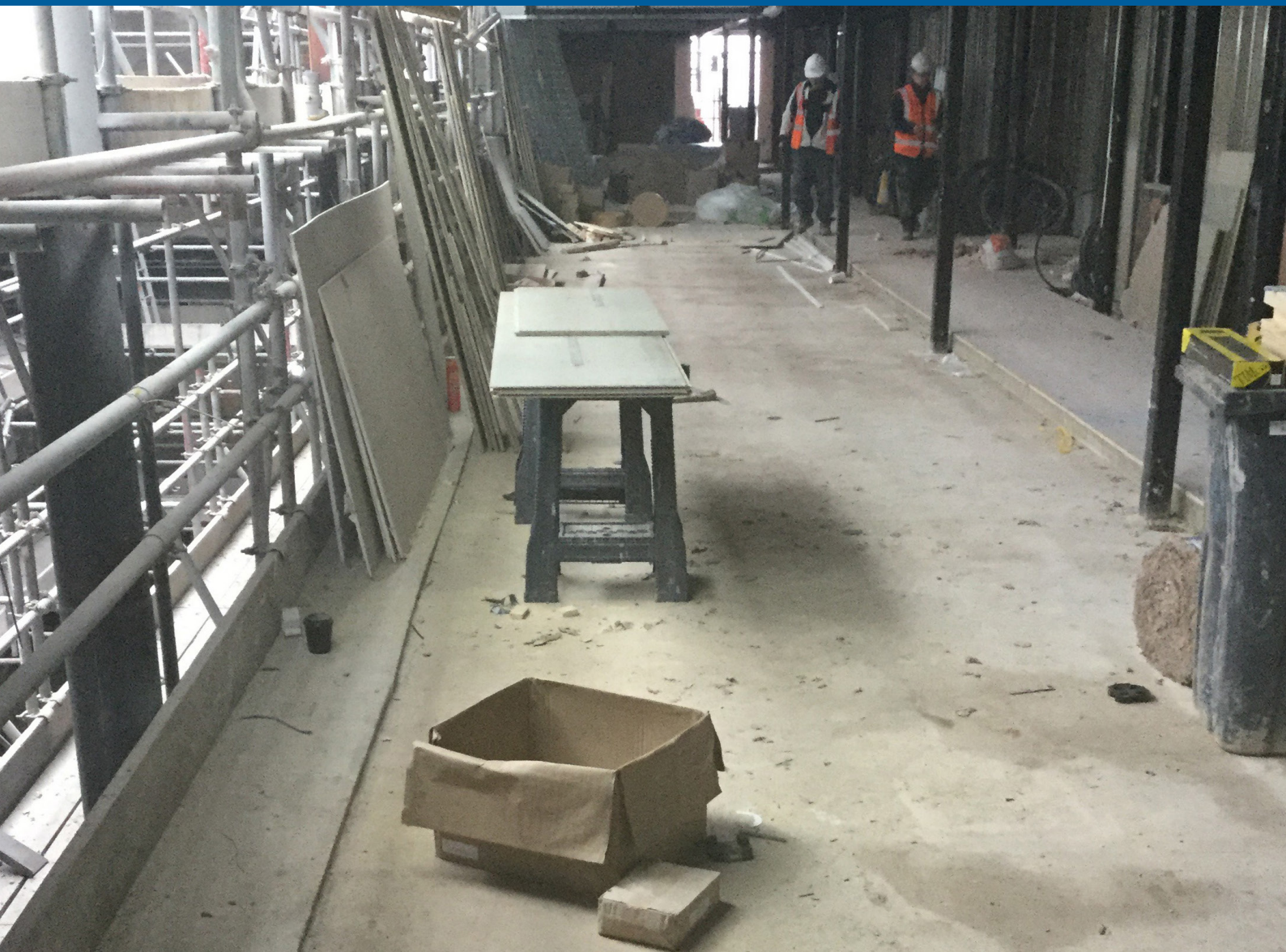


CASE STUDY: ELISABETH MILLS
APARTMENTS AND HOUSES

ONE SIMPLE AND RELIABLE POINT OF CONTACT

→ www.geberit.co.uk/industry



CASE STUDY: ELISABETH MILLS APARTMENTS AND HOUSES

PROJECT OVERVIEW

Elisabeth Mills is a new residential development that will see the conversion of an existing textile mill building into 163 apartments and 63 houses. Purchased by the owners over twenty years ago, the site will provide contemporary residential and communal space in the Houldsworth conservation area of Reddish, South Manchester.

Once complete, the new homes will showcase an example of adept restoration and protection of an historical building, helping preserve the character of its industrial heritage.

Central to the vision of the development is the creation of a vibrant community, centered around shared living and communal environments.

CHOOSING GEBERIT SILENT-PP

Due to the close-quarters and communal design of the residential complex, the development requires a waste drainage system with noise reducing properties. To comply with the brief, <xx> specified the award winning Geberit Silent-PP, an innovative pipework solution made from enhanced polypropylene composite.

An alternative to the time-consuming and costly method of lagged PVC, enhanced polypropylene composite is a mineral reinforced material, dense enough to contain airborne noise within the pipe. The enhanced sound insulation and hydraulic properties of Silent-PP reduces noise transfer and ensures quiet and effective drainage throughout the building complex.

Combining strong acoustic performance with robust strength, the versatile Silent-PP range brings many other benefits to the Elisabeth Mills project. For example, enhanced polypropylene is highly resistant to extreme temperatures and impact forces. This saves potential future maintenance costs by effectively reducing the need to fit again in the event of damage by other trades, freezing conditions or UV radiation.

CHOOSING TWYFORD CERAMICS

To match the stylish exterior of the regeneration project, developer, DeTrafford handpicked a bespoke collection of fittings to furnish the homes to the highest standard. As a result, Twyford ceramics were selected to feature across the developments' 200 bathrooms.

Twyford's Alcona range and Opal bath provides a practical yet smart and classically modern solution, matching all the project's requirements. Importantly, the clean-cut and sophisticated Alcona and Opal range complements the wider style of the interiors décor.



→ Project information

Location: Reddish, South Manchester

Contractor: Engie UK Contacts

Project Completion: TBC

→ Geberit Know-How

Problem: Conversion of existing textile mill in conservation area.

Solution: Geberit Silent-PP drainage and Twyford ceramics

"We were also very happy with the installation method. In particular, the Geberit Silent-PP push fit system provided a safe, chemical-free, and rapid installation process. Installers were simply required to push the components together and rotate to align them. Also, the reference nubs and stop ring took the guess work out of aligning the fittings properly and getting the correct insertion depth."

John Grundy
Karl Cranfield
Engie UK Contacts

CASE STUDY:

ELISABETH MILLS APARTMENTS AND HOUSES

DELIVERING THE SOLUTION

By using Geberit for their behind-the-wall pipework solution, as well as Twyford for their ceramics specification, contractor, Engie UK, had one simple and reliable point of contact for all advice and support on products. This minimised disruption, streamlined the assembly process and helped prevent any unnecessary project delays.

Discussing the product and installation efficiencies, John Grundy from Engie UK said: "Central to the project was creating not just a stylish, communal space, but also one that offers peace and harmony to residents. As such, Geberit Silent-PP proved the ideal specification for the building's pipework with its sound optimisation properties. Twyford also offered the perfect fit for ceramics with its modern yet minimal design.



→ Project information

Location: Reddish, South Manchester

Contractor: Engie UK Contacts

Project Completion: TBC

→ Geberit Know-How

Problem: Conversion of existing textile mill in conservation area.

Solution: Geberit Silent-PP drainage and Twyford ceramics

"The whole project from concept through to completion has been first class, including the excellent technical support provided by Geberit. It was convenient knowing that the Geberit team were on hand to answer any queries we might have."

John Grundy
Karl Cranfield
Engie UK Contacts