

VIEW

REFERENCE
MAGAZINE
2018

ZEITZ MOCAA

BRILLIANT
TRANSFORMATION

BÜRGENSTOCK RESORT

MOUNTAIN IDYLL WITH
EXQUISITE COMFORT

PUBLISHER AND EDITOR

Geberit International AG,
Corporate Communications,
Schachenstrasse 77, CH-8645 Rapperswil-Jona

CONCEPT

Linkgroup AG, Zurich
www.linkgroup.ch

NUMBER OF COPIES

25,000. Issued: once annually.
The reproduction of individual articles,
in part or in full, is subject to approval
from the editorial staff.

ON THE COVER

The Zeitz Museum of Contemporary Art Africa
has moved into a former grain silo in Cape Town
harbour. A look into the atrium shows the cut-out
tube chambers in which grain used to be stored.

PHOTOS

© AELTC/Bob Martin (page 56)
Ben Guthrie (pages 19–21)
Ben Huggler (pages 26–31, 39, 57)
Brígida González for Allmann Sattler Wappner
Architekten (pages 12–14)
Delfino Sisto Legnani and Marco Cappelletti
© OMA (pages 64–66)
Flavio Coddou (pages 6/7)
Hufton + Crow (pages 4, 16/17)
Inhouse Fotografi – Søren Wasilewski-Beyer
(pages 36/37)
Intep – Integrale Planung GmbH (page 48)
Iwan Baan (cover, pages 5, 40–41)
Jochen Stüber (page 38)
MahaNakhon by Buro Ole Scheeren Group
through HLS. Photo by: Alexander Roan (page 18)
Martin Gardner Photography (page 8)
Mecanoo architecten (pages 54/55)
Michael Seirer (page 67)
Michael Suter (page 15)
Muraba Properties LLC (page 9)
Nicolas Mathéus (pages 46/47)
Paul Raftery (pages 44/45)
Scagliola Brakkee fotografie (pages 62/63)
Scott Francis (pages 4, 10/11)
Sergio Grazia (pages 50–53)
The Royal Portfolio (pages 42/43)
Tomasz Majewski Photography (pages 5, 58–61)
Tribecraft AG (page 25)
© Trond Isaksen, Statsbygg (page 60)
© Vitsø/Dirk Lindner (pages 4, 22–24)
Wayne Chasan (pages 4, 34–35)
Žiga Lovšin (pages 70/71)

ONCE A YEAR, "VIEW" PROVIDES A SNAPSHOT OF WHAT IS GOING ON AROUND THE WORLD IN THE FIELDS OF ARCHITECTURE AND INTERIOR DESIGN.

In this issue, you will find over 20 recent projects from almost as many countries. Our journey takes us from a single-family house to an office building and hotel, all the way through to a museum and sports arena. What all of these have in common, of course, is products from Geberit – all of which play their part in mastering the respective construction task. Building professionals rely on our solutions because they know that they have been extensively tested, are easy to handle and ensure sustainable operation of the respective building.

If a certain task is causing a headache, our experts are never far away and are always willing to help. In this way, we support our partners – wherever in the world they may be – with our proven know-how in the field of sanitary technology. A prime example of this is the International House in Sydney shown in this issue, where our advisors were on site to train the plumbers on how to work with our piping system. As the wooden office building has exposed pipes, the results can even be seen with the naked eye for a change.

The Geberit Group has made a name for itself with top-class sanitary technology. However, this is only one side of the story: with newly acquired expertise in the field of bathroom design, the fruits of our knowledge are also becoming increasingly visible as well. We continue to remain faithful to our goal of improving people's quality of life through innovative technology. The Bürgenstock Resort in Central Switzerland is a classic example of this: the AquaClean Sela shower toilet was installed here because it meets the demands of an international clientele in terms of design and comfort whilst also ensuring simple – and thus quick and cost-effective – maintenance for the hotel operators.



CHRISTIAN BUHL
CEO OF THE GEBERIT GROUP



↑ 10 LIVING
WEST SIDE DREAMING

↓ 16 HIGH-RISE
ALL IN ONE



22 WORKING
EVERGREEN



↑ 34 HOSPITALITY
FIT FOR A KING

LIVING

- 6 Chimney House, Slovenia
- 8 The Crow's Nest, UK
- 9 Muraba Residences, UAE
- 10 520 West 28th Street, USA
- 12 Friends, Germany

HIGH-RISE

- 16 Raffles City, China
- 18 MahaNakhon, Thailand

WORKING

- 19 International House, Australia
- 22 Vitsoe company headquarters, UK

HOSPITALITY

- 26 Bürgenstock Resort, Switzerland
- 32 Il Sereno, Italy
- 34 Grand Hotel Miramar, Spain
- 36 Hvidbjerg Strand, Denmark
- 38 The Fontenay, Germany



↑ 58 INSTITUTION ATELIER WITH SCOPE



↑ 40 CULTURE ARTFUL SILO

CULTURE

- 40 Zeitz MOCAA and The Silo, South Africa
- 44 Museum of the Second World War, Poland
- 46 Musée Yves Saint Laurent, Morocco
- 50 Lascaux IV, France
- 54 Keukenhof, the Netherlands
- 56 Wimbledon No. 1 Court, UK

INSTITUTION

- 58 Faculty of Fine Art, Music and Design (KMD), Norway
- 62 Sportcampus Zuiderpark, the Netherlands
- 64 Bibliothèque Alexis de Tocqueville, France
- 67 Vienna North Hospital, Austria

DESIGN MEETS FUNCTION

- 15 Acanto
- 25 Setaplano
- 39 AquaClean Tuma
- 57 Tap system
- 48 Consultancy work on sustainability
- 68 Green building, Index Geberit
- 69 Spectrum
- 70 Waterways

CHIMNEY HOUSE, LOGATEC, SLOVENIA

RUGGED APPEAL



The Chimney House engages in a dialogue with Sveti Janez church.

The full appeal of this residential building from Dekleva Gregorič Architects only becomes apparent when seen in context next to the neighbouring structures.

The Chimney House in the Slovenian town of Logatec is flanked by a barn on one side and a 16th-century church on the other. Encased in oiled larch wood, the building owes its name to the roof section that runs centrally across the entire length of the structure.

COMPACT THANKS TO SKYLIGHT

Only after entering the building does the primary function of this flat roof become clear, namely as a skylight for providing the kitchen, neighbouring dining area and bedroom with ample daylight. As a central design element, it establishes a strict spatial alignment along the longitudinal axis of the building that is only broken up by individual openings on the side.

LIVING

The bedroom and kitchen benefit in particular from the daylight from above.



CHIMNEY HOUSE

Building owner: Private

Architecture: Dekleva Gregorič Architects,
Ljubljana

Completed: March 2016

GEBERIT KNOW-HOW

Geberit Sigma concealed cistern 12 cm

THE CROW'S NEST, LYME REGIS, UK

CLIFFSIDE LAIR



↑

Clad in light larch wood, this holiday home is located on the Jurassic Coast in Dorset, a World Heritage Site famous for the wide range of fossils found there.

As its turbulent history suggested, work on The Crow's Nest on the English Channel coast was going to be anything but easy – in the past 50 years, two buildings had already fallen victim to the precarious ground conditions prevalent in this picturesque area.

“The idea of movement and fracturing formed the backbone of the concept.”

AR DESIGN STUDIO

While another project was dealt a fatal blow as a result of coastal subsistence, this in fact turned into an opportunity to implement a solid solution that was so bitterly needed. Planned once again from scratch, a floating structural frame now acts as an adjustable raft in case of future movement. The result is an irregularly shaped structure made up of four pods set against the beautiful, rugged coastline.

THE CROW'S NEST

Building owner: Private

Architecture: AR Design Studio

Completed: December 2016

GEBERIT KNOW-HOW

Geberit Duofix installation system

Geberit actuator plate Sigma20

MURABA RESIDENCES

Building owner: Muraba Properties LLC

Architecture: RCR Arquitectes, Olot (Girona)

Completed: July 2017

GEBERIT KNOW-HOW

Geberit Duofix installation system

Geberit actuator plate Sigma70

Geberit HDPE drainage system



MURABA RESIDENCES PALM JUMEIRAH,
DUBAI, UAE

ROOM WITH A VIEW



RCR Arquitectes – winners of the 2017 Pritzker Prize – pride themselves on projects that have a strong reference to their surroundings. This was also the case in a residential construction completed far away from their home in Catalonia.

The building features 46 luxury apartments and four penthouse suites and is located on the Eastern Crescent of Palm Jumeirah, the famous artificial archipelago off the coast of Dubai. Its exposed position gives the residents a breathtaking view of the skyline of the desert metropolis. The building is characterised by its minimal transition between interior and exterior spaces and an eye for finely crafted details.

The entrance area of the new luxury residential building by Zaha Hadid Architects is characterised by organic forms.



520 WEST 28TH STREET, NEW YORK CITY, USA

WEST SIDE DREAMING



↑
The signature style of Zaha Hadid is ever-present in the spa area.

↑
West Chin Architects (pictured) and the designer Jennifer Post were responsible for furnishing two model apartments.

520 WEST 28TH STREET
Building owner: Related
Architecture: Zaha Hadid Architects, London
Completed: October 2017

GEBERIT KNOW-HOW
Geberit Omega concealed cistern
Geberit actuator plate Omega60
Geberit urinal flush control type 70

Zaha Hadid Architects has built an 11-floor residential building containing 39 luxury apartments in the Chelsea neighbourhood of New York City.

Its futuristic curves are a real eye-catcher, particularly to anyone walking on the neighbouring High Line – the remodelled rail trail on the west side of Manhattan. A look behind the elegantly forged metal facade reveals living space of the highest standard, divided up into residential units with two to five bedrooms.

FRIENDS, MUNICH, GERMANY

TRENDSETTER

"Friends" is a fitting name for the two residential towers that serve as the driving force behind the newly developed area around the Hirschgarten in Munich.





FRIENDS

Building owner: LBBW Immobilien
Capital GmbH

Architecture: Allmann Sattler Wappner,
Munich

Completed: March 2017

GEBERIT KNOW-HOW

Geberit GIS installation system

Geberit Duofix installation system

Geberit Mepla & Mapress Stainless Steel
supply systems

Geberit Silent-db20 drainage system



Attractive inside and out: the bay windows give Friends its characteristic appearance and also offer expansive views.

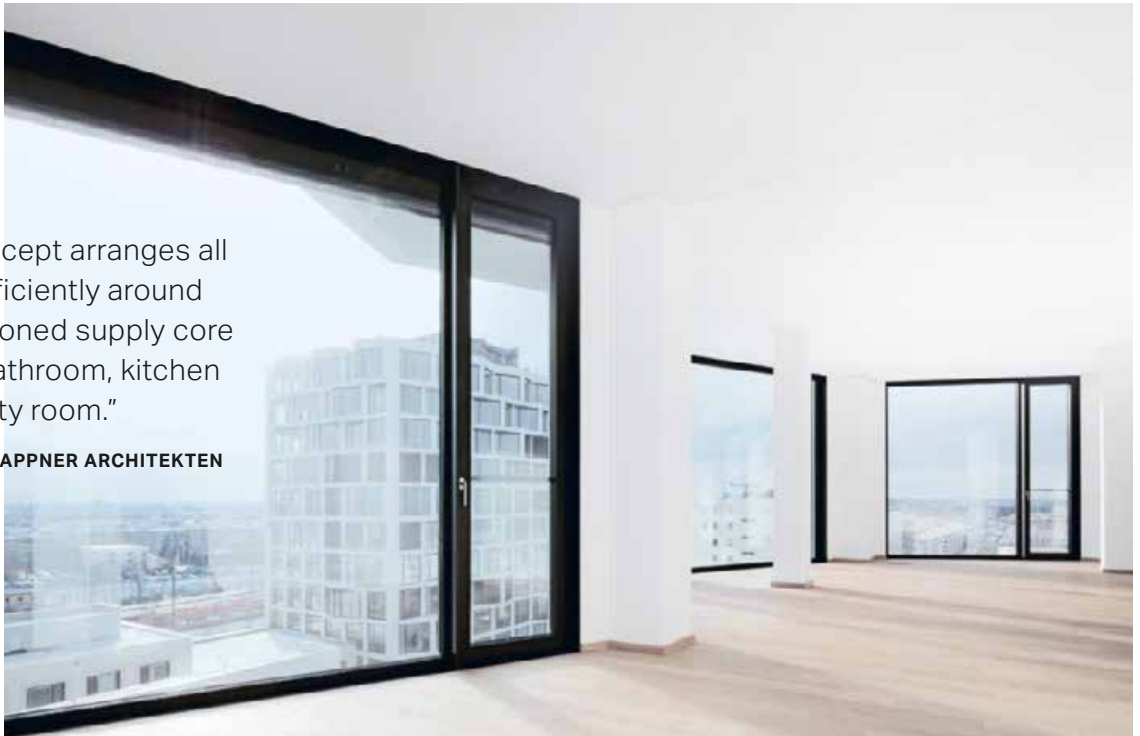
The real estate sector is called upon to deliver solutions for the changing habits and demands of an increasingly urban population. One of these is "smart sharing". Based on market analyses, LBBW Immobilien planned and built these luxury apartments with smart sharing in mind.

ADDED QUALITY OF LIFE

Roof terraces and event kitchens can be shared among the residents and also rented by other parties. This then gives the scope for automatically counteracting the anonymisation of everyday life in the big city. The added quality of life is also apparent inside the 260 apartments. Generously proportioned bay windows, which protrude further out the higher up the 15-floor building you go, provide beautiful panoramic views of the city. →

“The spatial concept arranges all living areas efficiently around a centrally positioned supply core consisting of bathroom, kitchen and utility room.”

ALLMANN SATTLER WAPPNER ARCHITEKTEN



Friends is expected to drive the urban development close to the Hirschgarten in Munich.

AN OASIS OF PEACE AND QUIET

Whilst the quality of the view may vary from floor to floor, the technical installations all have a uniformly low-noise design. This is largely down to the Silent-db20 drainage system from Geberit. The pipes and fittings are acoustically and hydraulically optimised and carry out their tasks quietly and effectively.

GEBERIT ACANTO BATHROOM SERIES

NO COMPROMISES

The Acanto bathroom series is the perfect solution for meeting the most diverse bathroom design needs with a single bathroom series. The special focus here is on the optimal use and flexible design of the available storage space. With the wash-basin cabinets, optional drawer inserts create a perfectly tailored, uncluttered environment in the piece of furniture. The Acanto magnetic boards make it possible for customers to attach storage trays precisely where cosmetic products or other items are needed. These trays can also be rearranged in next to no time.



"We tried to translate everyday wishes and needs to the product level – both in terms of function and aesthetic appeal. Contemporary design, the material selection, good value for money and sophisticated features that allow scope for individuality are important aspects here."

SARAH SEIDEL, PRODUCT DESIGNER AT GEBERIT



www.geberit.com/products →
Product range

The twisting of the buildings is more than just pure aesthetics – combined with the positioning of the towers, this optimises ventilation and allows daylight to be utilised to the full.

RAFFLES CITY, HANGZHOU,
CHINA

ALL IN ONE





↑

A city within a city:
The high-density Raffles
City complex features a
range of uses.

“Superliving” is a concept from UNStudio that is aimed towards enhancing the urban lifestyle. Thanks to its complex interplay of different uses, Raffles City can be seen as a successful example of this idea in practice.

It is no accident that this flagship project for the new commercial centre of Hangzhou has the word “city” in its name. UNStudio wanted to establish a central meeting place here. Good reasons for this are provided by the wide range of building uses – the expansive floor area of almost 400,000 m² is divided up into hotel, office and store space, plus apartments.

PLAYING WITH OPPOSITES

The stores are located in the podium, which covers seven floors and is arranged around an atrium that is flooded with light. Above the podium, two 250-metre-high towers soar into the sky: each tower consists of an “urban facade” that frames the urban corner of the site, and a horizontally articulated “landscape facade” that descends into the landscaped courtyards at podium level. As the urban face of the building twists towards the landscape and vice versa, the towers complement each other – as if engaging in dialogue.

RAFFLES CITY

Building owner: CapitaLand
Architecture: UNStudio,
Shanghai
Green building: LEED Gold
Completed: September 2017

GEBERIT KNOW-HOW

Geberit Pluvia roof
drainage system

MAHANAKHON, BANGKOK, THAILAND

A PIXELATED TOWER

Despite being the tallest building in Thailand at an impressive height of 314 metres, it is MahaNakhon's unique pixelated glass facade that is attracting more attention. The striking skyscraper, which is located in Bangkok's business district, looks like a spiral-shaped furrow had been ploughed around it. In addition to its aesthetic merits, the pixel motif also has entirely practical benefits, with the staggered arrangement of the glass boxes creating outdoor areas – something that is very much appreciated by hotel guests, diners and residents alike due to the city's tropical climate.

MahaNakhon's 77 storeys are home to 200 apartments, a boutique hotel and a range of shops, cafes and restaurants.

MAHANAKHON

Building owner: Pace Development Corporation

Architecture: Buro Ole Scheeren Group

Planned completion: January 2018

GEBERIT KNOW-HOW

Sigma concealed cistern 12 cm

Bolero actuator plate



INTERNATIONAL HOUSE, SYDNEY, AUSTRALIA

INDUSTRIAL LOOK



↑

Visible for a change: the Geberit HDPE piping system at the International House not only ensures reliable roof drainage – it also emphasises the industrial look of the building interior.

“Geberit don't just offer a great product, they provide a great level of service, both off and on site.”

**NICK STOREY, SENIOR HYDRAULIC
DESIGNER, LENDLEASE**

Built entirely in wood, this office building is absolutely without equal across Australia. In less than one year, the International House was ready to move into. →

WORKING



INTERNATIONAL HOUSE

Building owner: Lendlease

Architecture: Tzannes Architects, Sydney

Green building: 6-Star Green Star rating

Completed: May 2017

GEBERIT KNOW-HOW

Geberit Pluvia roof drainage system

Geberit HDPE piping system

Barangaroo is the most comprehensive urban development project seen in Sydney since the Olympic Games back in 2000. In this inner-city suburb located to the west of the city centre, a mixture of offices, retail spaces, hotels, restaurants and leisure facilities is springing up across an area of 22 hectares. The promenade nearby and the view of the famous Sydney Harbour Bridge are important parts of the winning formula laid out by the real estate developer Lendlease.

SUSTAINABLE THROUGH AND THROUGH

Located at the southern tip of the development area, the International House is a refreshing new example of sustainable office architecture. An impressive 2,000 m³ of cross-laminated timber and 950 m³ of glued laminated timber were used in the seven-floor building. The selected materials not only have a positive effect on the atmosphere inside the building and the environmental record – a lot less noise and dust were also created compared to other building sites during the almost 12 months of construction.

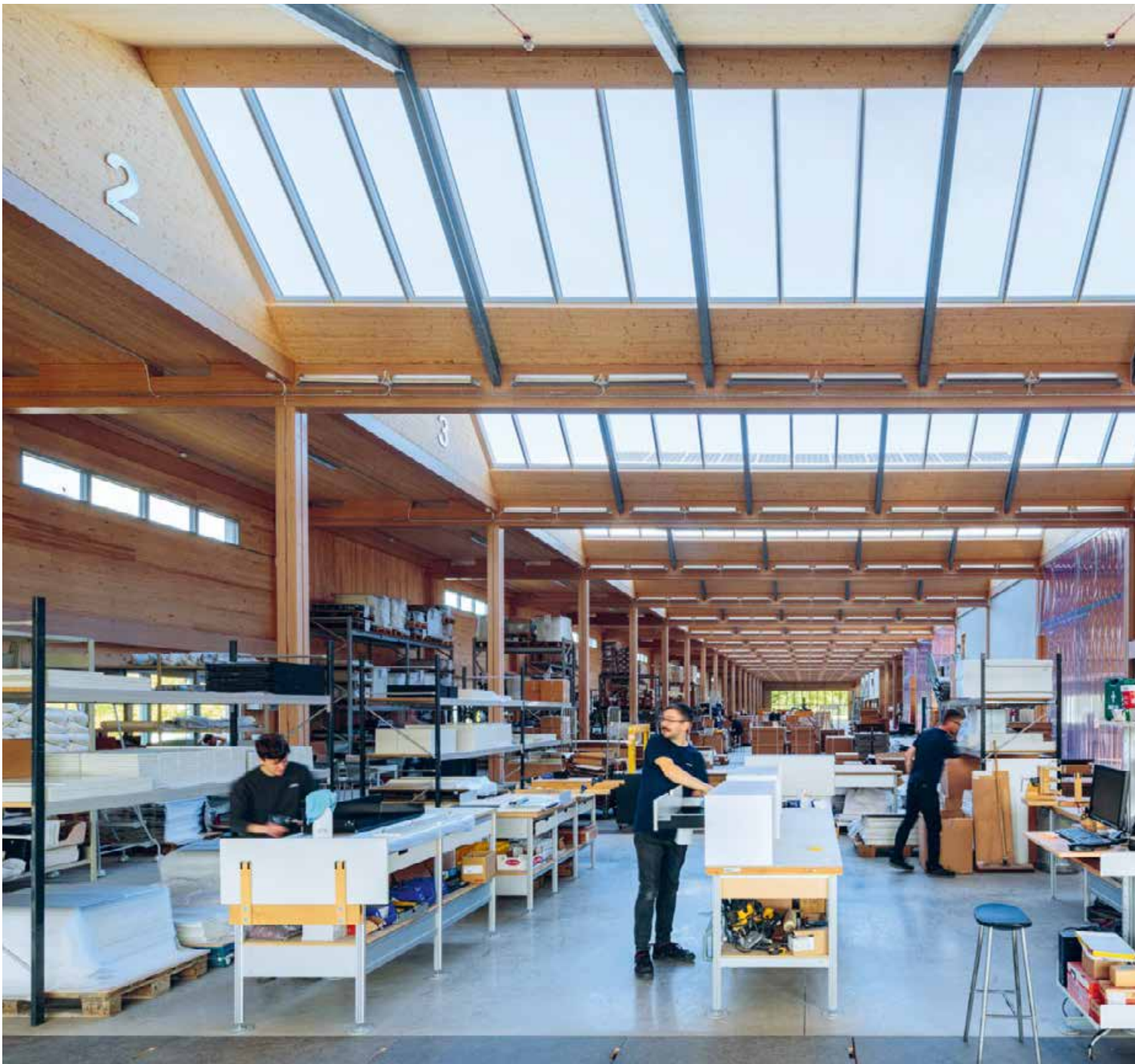
ON-SITE TRAINING

Qualified experts from Geberit trained the plumbers on site on how to correctly handle the HDPE pipes. The tried-and-tested Pluvia system ensures that the roof is reliably drained. This system is based on the principle of negative pressure, whereby maximum performance is ensured with a comparably low number of roof outlets and small pipe diameters.



↑

The International House is part of the Barangaroo South development project.



VITSE COMPANY HEADQUARTERS

Building owner: Vitsø

Architecture: Vitsø, Mark Skelly, Martin Francis,
Waugh Thistleton

Opened: October 2017

GEBERIT KNOW-HOW

Geberit Sigma concealed cistern 12 cm

Geberit actuator plates Sigma30 and Sigma40

Geberit Smyle bathroom series

Twyford E100 toilet

Twyford Geo6 shower partition wall

VITSOE COMPANY HEADQUARTERS, LEAMINGTON SPA, UK

EVERGREEN



The production hall is 135 metres long, 25 metres wide and 6 metres high. This is not just a place of work; cultural events also take place here.



The alignment of the sawtooth roof means that light values are usually above 1,000 lux, despite direct sunlight only entering the hall when the sun is at its highest.

With the construction of a new furniture production facility north-west of London, Vitsoe has translated its corporate philosophy into physical reality. →

→
The fact that a recently developed beech laminated veneer lumber was used as a construction element shows just how closely the construction process was intertwined with furniture production.



“Intentionally, the building will be unfinished, because it is alive and learning as it responds to an ever-changing world.”

**MARK ADAMS,
MANAGING DIRECTOR, VITSOE**

That the new Vitsoe headquarters would be entirely dedicated to functionality was clear from the outset. After all, the company was founded in 1959 to take the no-frills designs of the renowned industrial designer Dieter Rams and make them into furniture. His thinking remains an integral part of the corporate philosophy to this day.

READY FOR CHANGE

When planning the building, the same principles were applied that made the 606 Universal Shelving System into a modern design classic. Designed with sustainability and durability in mind, the building was constructed so that it could be easily adjusted to new types of usage in the event of future expansions.

A VERSATILE WORKSHOP

The selection of natural materials and the minimal use of artificial lighting and ventilation ensure that the link between the employees and the environment that surrounds them remains intact. With this holistic approach, it is no surprise that the extremely homely atmosphere within the factory opens up a great deal of scope for creativity. For example, the plan is for the light-flooded hall to also be used for readings and concerts outside operating hours.

GEBERIT SETAPLANO
SHOWER SURFACE

TOUCH IT, LOVE IT

Floor-even showers are very popular because they substantially expand the scope of design possibilities in the bathroom. Plumbers love the Geberit shower surface Setaplano due to the fact that many of the components are delivered already premounted, which greatly reduces the amount of work and the risk of errors during installation. With customers, on the other hand, it is mostly the silky smooth surface and its excellent non-slip properties that leaves a lasting impression – very much in line with the motto “Touch it, love it”.



“Made of a solid surface material that boasts a silky smooth feel, it is a calm piece of bathroom floor where the inclination is hardly visible. Only from beneath the drain cover does the metal ring discreetly glisten, framing our most important design achievement – an edgeless drain without gaps that is child’s play to clean.”

TOM STÄUBLI, PRODUCT DESIGNER AT TRIBE CRAFT, ZÜRICH



www.geberit.com/products →
Product range



The funicular transports the resort guests directly into the Bürgenstock Hotel.

BÜRGENSTOCK RESORT, OBBÜRGEN, SWITZERLAND

ROUSED FROM SLUMBER



BÜRGENSTOCK RESORT

Building owner: Bürgenstock Selection

Architecture: Rüssli Architekten, Lucerne (Bürgenstock Hotel); Lüscher Bucher Theiler Architekten, Lucerne (Palace); Matteo Thun, Milan (Medical Wellness Waldhotel)

Opened: September 2017

GEBERIT KNOW-HOW

Geberit AquaClean Sela

Pozzi-Ginori washbasin Egg



↑

The Palace (built in 1903) is now shining in new splendour following extensive restoration work.

With the Bürgenstock Resort high above Lake Lucerne, a piece of tourism history is now shining in new splendour. While guests from all over the world can choose from a range of activities that are as broad as they are diverse, the Geberit AquaClean Sela shower toilet is a permanent fixture in all suites.

The Bürgenstock Funicular – which was Switzerland’s first electrical funicular railway – masters the rise of 440 metres as elegantly as ever before. Once you have reached the top, you can immediately see why the origins of the hotel business on the Bürgenstock go back as far as 1873: the buildings nestle against the mountainside above Lake Lucerne like an eagle’s nest, offering a panorama that stretches from Lucerne and the surrounding hills right through to the Alpine peaks.

VARIETY IS THE SPICE OF LIFE

Apart from the classically styled Palace, the rest of the hotel resort is now unrecognisable. In the most prominent position is the flagship of the new resort – the Bürgenstock Hotel with its dark limestone facade. The top station of the funicular is located inside

this building. A few steps away is the Medical Wellness Waldhotel, whose gabion facade is based on the Vigilius Mountain Resort in South Tyrol, which – like the Medical Wellness Waldhotel – was designed by Matteo Thun.

THE COMMON DENOMINATOR

Opened in stages from July 2017, the Bürgenstock Resort has something for everyone – whether congress participants, those looking to relax or those looking to engage in more active pursuits. One common denominator is the Geberit AquaClean Sela shower toilet, which can be found in the three main buildings – the Palace, the Bürgenstock Hotel and the Medical Wellness Waldhotel.

→



The lobby with views of Lake Lucerne.



INTERVIEW WITH BRUNO H. SCHÖPFER,
MANAGING DIRECTOR OF BÜRGENSTOCK SELECTION

“WHAT COUNTS IS THE OVERALL PACKAGE”

Bruno H. Schöpfer is the driving force behind the Bürgenstock Resort. During the planning phase, the experienced hotelier left nothing to chance. Only products that impressed in every respect – such as Geberit AquaClean – were given the nod.

BRUNO H. SCHÖPFER

The Swiss hotelier can look back on a long and successful career in the branch. He has worked predominantly in Asia and Europe. Since 2008, he has been in charge of the Katara Hospitality Group's Bürgenstock Selection, which also includes the Schweizerhof in Berne and the Royal Savoy in Lausanne. With this flagship project on the Bürgenstock, he has gone back to his roots – he had once attended the hotel management school in Lucerne.

It is the end of September, and the Palace and Bürgenstock Hotel are already up and running. Do you feel as if you have reached the finishing line?

Quite the opposite, the work is just beginning. I am a hotelier. And as such, I have to work together with my team to make sure that the hotel beds are filled.

Work is still ongoing at the Waldhotel. Is everything on schedule here?

Absolutely. I was at the Waldhotel just now. We are making rapid progress and the construction work will be completed at the end of October. This applies to the spa as well. The Bürgenstock Hotel was only officially opened last week. At the moment, we are being swamped with requests for rooms.

The fact that everything is running like clockwork in a 550-million-franc project is remarkable, especially when you consider that the project in question is a piece of Swiss tourism history.

As we involved the relevant associations from the very beginning, we didn't experience any major delays as a result of objections. That said, the project was no walk in the park. We had many hurdles to overcome, with two zonal plans, two design plans and 147 building permits.

What is the underlying vision of the Bürgenstock Resort?

The initial situation was a complex one, with no fewer than 12 buildings worthy of preservation, some of which blocked the fantastic panoramic view of Lake Lucerne. The old ensemble didn't allow a view of the lake, which was something we wanted to change.

“The old ensemble didn't allow a view of the lake.”

What was your solution?

With the new Bürgenstock Hotel, we took the largest building volume and put it in the best position. All 102 rooms have outstanding views, as do the lobby, ballroom and Spices restaurant. At the same time, we invested 43 million francs in modernising the old infrastructure alone. This also includes the funicular railway, which now leads to the public area of the Bürgenstock Hotel.

How did the completed project come about?

We carried out eight architectural competitions. In addition to the Bürgenstock Hotel, both tennis centres, the Panorama Residence suites, the Lakeview →



←

Refreshing comfort: the Geberit AquaClean Sela shower toilet is found in all suites at the resort, including those at the Medical Wellness Waldhotel.

What do you look out for in particular when it comes to the shower toilet?

The time and effort required for repairs and maintenance is decisive. If I have to remove the toilet to rectify a problem, then the room is not available. At the same time, my technical services team is also booked out for an hour or two. If the shower toilet was affected, this would be a fault that we would have to rectify in 384 rooms. This is something we can't afford to do.

With this in mind, what won you over on the Geberit AquaClean Sela?

What counts is the overall package. This includes the technical characteristics of the product in terms of functionality and maintenance, the design, the services offered by the company and the price.

Speaking of design, to what extent does the Sela fit in with the very different styles found in the resort?

I would say that it fits in particularly well in the Waldhotel, where we wanted to consciously steer clear of the sterile conditions of a clinic and instead focus on freshness and hygiene.

Residence villas and the Alpine Spa, among others, were all decided by competitions. All in all, around two dozen architects were involved throughout the entire project.

Yet there was no competition held for the Waldhotel and the Palace?

No, the Medical Wellness Waldhotel was based on Matteo Thun's design for the Vigilius Mountain Resort in South Tyrol. The goal here was to take his basic idea of using building materials from the surrounding area and transfer this to a 160-room hotel. In the case of the Palace, the challenge was to bring the lobby back into its original state from 1903. This was a job for certified specialists in historic restorations only.

The shower toilet can be found in all three hotels. Which considerations led to your decision?

I have long thought about installing shower toilets in our hotels. However, until recently I didn't think it was the right time for them. In the hotel business, launching a new trend cannot be your aim. Jumping on the bandwagon early usually doesn't pay dividends.

"I can't afford to correct the same fault in 384 rooms."

HOSPITALITY



Suite at the Bürgenstock Hotel.



Bathroom in the Palace.

The hotel resort includes a restaurant, a spa area and a private harbour. The facade of the elegant complex opens out towards the lake through large glass fronts.



HOTEL IL SERENO, TORNO, ITALY

HOTSPOT ON THE LAKE

Wood and stone mixed with copper and selected textiles – this is the composition put forward by interior designer Patricia Urquiola for the 30-room hotel, which is located in a prime position on Lake Como.

→
Calm earthy tones supplemented
with individual colour elements
dominate in all rooms.



IL SERENO

Building owner: Sereno Hotels

Interior design: Patricia Urquiola

Opened: August 2016

GEBERIT KNOW-HOW

Geberit AquaClean Mera Comfort & Sela

Geberit urinal system with Preda urinal ceramic
appliance

Geberit actuator plate Sigma70



Numerous hotels of all shapes and sizes are dotted around Italy's third-largest lake. Since summer 2016, the famous tourist destination at the southern edge of the Alps is now also home to a dazzling new address. With Il Sereno in Torno, a new luxury hotel has been opened that is among the top 25 hotels worldwide.

**EXQUISITE COMFORT
IN THE SUITES**

This exclusive, international hotspot is the work of renowned architect and designer Patricia Urquiola. Born in Spain and now living and working in Milan, she studied under the tutelage of industrial designer Achille Castiglioni. Some of her pieces of furniture are already design classics and can be found in the Museum of Modern Art in New York. As the goal was to offer the highest standards coupled with optimal comfort and well-being, the bathrooms in all 30 suites were equipped with the elegant AquaClean Mera and Sela shower toilets.

↑

Patricia Urquiola designed a simple, stylish interior featuring natural materials and high-quality furniture for the bathrooms as well as the sanitary facilities in the public areas of the hotel.

GRAN HOTEL MIRAMAR, MÁLAGA, SPAIN

FIT FOR A KING

This palatial five-star hotel has been returned to its old splendour. Whilst the hotel lobby is now located in the covered inner courtyard, modern technology and innovative design ensure maximum comfort in the 190 suites.



In its almost 100 years of existence, this magnificent building on the Paseo de Reding in Málaga has seen a lot. Officially opened in 1926 by King Alfonso XIII, it was used as a field hospital during the Spanish Civil War and served as a court building from 1987 to 2007.

OLD WALLS, NEW SPLENDOUR

In 2016, the Miramar was purchased by Santos Hotels, who wasted no time in changing the building back into a luxury hotel. Classic elegance and high-quality workmanship also played a key role when it came to refurbishing the bathrooms. As they offer convincing design, comfort and energy efficiency, it is thus no surprise that Geberit products are found throughout.



Opened in 1926, the building was designed by architect Fernando Guerrero Strachan – who was also briefly mayor of Málaga.



GRAN HOTEL MIRAMAR

Building owner: Santos Hotels

Architecture: Estudio Segui, Málaga

Completed: December 2016

GEBERIT KNOW-HOW

Geberit Duofix installation system

Geberit concealed cisterns Omega, Sigma 8 cm & Sigma 12 cm

Geberit actuator plates Omega30 & Sigma50

Geberit urinal system with Preda urinal ceramic appliance

Geberit electronic washbasin taps with self-sustaining power supply

HVIDBJERG STRAND CAMPING & RESORT, BLÅVAND, DENMARK

NORDIC FRESHNESS



Nestled in a picturesque dune landscape, the new Hvidbjerg Resort offers a wide range of entertainment and relaxation options. In the stylish beach hotel, the Geberit AquaClean Mera ensures comfort of the highest standard.



HVIDBJERG STRAND

Building owner: Hvidbjerg Strand
Camping & Resort

Architecture: Baks Arkitekter, Risskov

Opened: June 2017

GEBERIT KNOW-HOW

Geberit AquaClean Mera Comfort



“Our guests love being inspired by new furnishing ideas. We often hear guests rave about their visit to the toilet.”

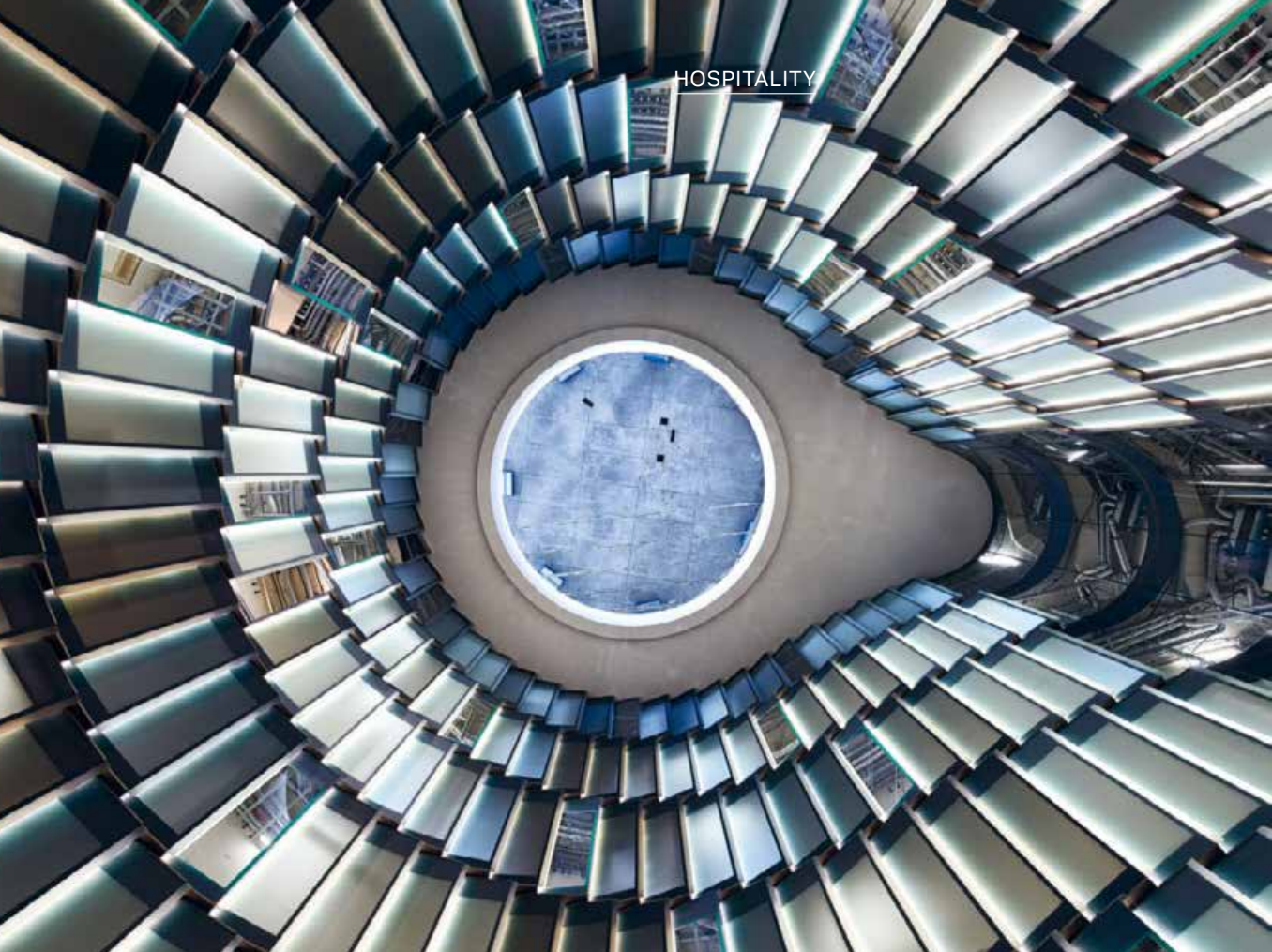
**STEEN SLAIKJÆR, OWNER OF HVIDBJERG STRAND
CAMPING & RESORT**

The Tirpitz Museum from architect Bjarke Ingels is not the only reason to take a trip to the west coast of Denmark at the moment. Located just a stone's throw away, a new resort also welcomed its first guests at the same time the museum opened its doors. The Hvidbjerg Strand beach hotel offers 24 suites with a sea view, all of which are equipped with shower toilets from Geberit.

INTERNATIONAL GUESTS

The resort – which also includes 23 beachside villas, a spa area and a water park – is open all year round. In its first summer, most of the guests staying overnight came from Denmark, Germany, Sweden, the Netherlands and Switzerland. In all of these countries, the shower toilet is becoming more and more popular in private homes. There is also a good chance that the shower toilet will gain more fans among the guests staying at the beach hotel.





A view up to the ceiling of the 27-metre-high atrium. This photo from 2016 shows the technical building systems installed in the ceiling in their uncovered state. The grand opening of The Fontenay is planned to take place before the end of 2017.

THE FONTENAY, HAMBURG, GERMANY

A PREMIUM ADDRESS

THE FONTENAY

Building owner: Klaus-Michael Kühne

Architecture: Störmer Murphy and Partners GbR, Hamburg

Completion: after going to press

GEBERIT KNOW-HOW

Geberit AquaClean Mera Comfort

Geberit actuator plate Sigma80

Geberit Duofix installation system

Geberit Silent-db20 drainage system

Geberit actuator plate Sigma70 (public areas)

Geberit Preda urinal ceramic appliance (public areas)

Located on the south-west bank of the Aussenalster, the five-star superior hotel will have 131 rooms and suites – all equipped with the AquaClean Mera Comfort shower toilet. With its high-quality materials and soft lines, the premium shower toilet is a perfect match for the elegant bathroom atmosphere and offers hotel guests the greatest possible comfort.

GEBERIT AQUACLEAN TUMA

SURPRISINGLY VERSATILE

With the AquaClean Tuma, Geberit has developed a comfortable shower toilet that brings freshness and comfort to any home. Thanks to its compact design, even small bathrooms can be utilised optimally and functionally enhanced. The well-thought-out product concept combines simple, elegant design and sophisticated technology.



"I am absolutely certain that products such as the shower toilets from Geberit can bring about a change of culture in the bathroom. Innovative functions such as the anal shower, warm-air dryer, odour extraction unit and WC seat heating make everyday hygiene a child's play. In all of its basic functions, the AquaClean Tuma shower toilet is a product that perfectly communicates the experience that Geberit wishes to give to people."

CHRISTOPH BEHLING, PRODUCT DESIGNER AT
CHRISTOPH BEHLING DESIGN, LONDON



www.geberit.com/products →
Product range

CULTURE

ZEITZ MUSEUM OF CONTEMPORARY ART AFRICA AND
THE SILO HOTEL, CAPE TOWN, SOUTH AFRICA

ARTFUL SILO

The building was originally made up of two parts. The grain was stored in the tube chambers before being conveyed next door into the tower for sorting.

ZEITZ MOCAA AND THE SILO HOTEL

Building owner: Victoria & Alfred Waterfront Holdings (Pty) Ltd

Architecture: Heatherwick Studio, London

Green building: 4-Star Green Star rating

Completed: September 2017

GEBERIT KNOW-HOW

Geberit Duofix and Kombifix installation systems

Geberit Sigma concealed cisterns
8 cm and 12 cm

Geberit actuator plate Sigma50

Geberit urinal flush control with electronic flush actuation

Geberit HDPE drainage system

Geberit Mepla supply system



↑
Carved out of individual tube chambers, the atrium – which measures 4,600 m³ – is modelled on a grain kernel.

A grain silo in Cape Town harbour is becoming a focal point for art emerging from the African continent. The designers from the renowned Heatherwick Studio were behind the radical conversion.

The silo area is a major development project that has gradually given the Victoria & Alfred Waterfront a new look in recent years. At the heart of the area is silo number 5. Once South Africa's largest building, grain was stored here until 1990. In mid-September 2017, this was the site for the public unveiling of what is currently the most comprehensive collection of artwork from Africa and the African diaspora.

HONEYCOMB DESIGN

Heavy machinery was required in order to carry out the conversion. Several of the 42 compactly arranged tube chambers – each measuring 6 metres in diameter – were carved out to form an imposing hollow space that now serves as an atrium. Other chambers were removed in order to gain additional space. This and other measures resulted in a floor space of 9,500 m², around two-thirds of which is reserved for the 80 exhibition rooms spread over nine levels. →



↑

Traces from the past are integrated in the eclectic design of the hotel lobby.

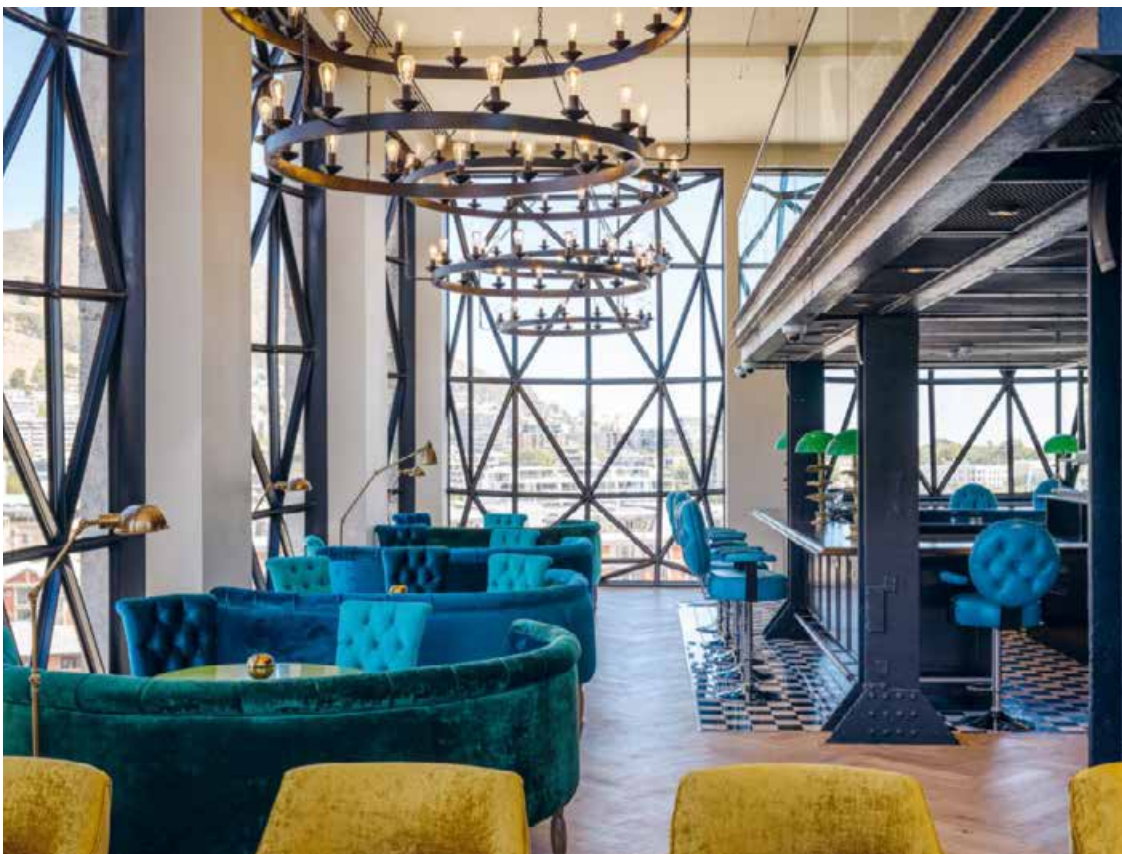
THE PERFECT SOLUTION

The upper floors of the tower – which previously housed the feeding and sorting systems – are now home to the five-star hotel The Silo. For structural reasons, lightweight prewall systems were the best solution when it came to planning and designing the sanitary facilities in the 28 suites. The perfect solution was soon found in Geberit Duofix, as the self-support-

ing, powder-coated installation elements are ideally suited to space-saving installation. They are fitted with Sigma concealed cisterns, which work with a water-saving dual flush.



←
The 28 suites boast spectacular views on all sides.



←
Thanks to the room-height windows, the surroundings are ever-present in the Willaston Bar of the Silo Hotel.

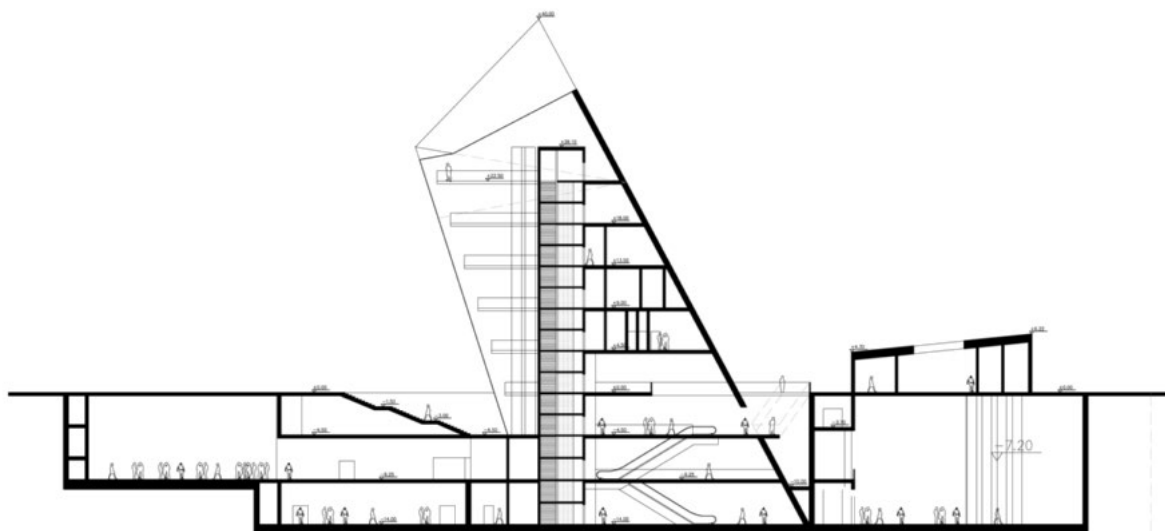
CULTURE

The museum explores a variety of aspects of the Second World War. One focus is on the experience realms of the people.



MUSEUM OF THE SECOND WORLD WAR, GDANSK, POLAND

WHERE IT HAPPENED



Gdansk was the site of the initial invasion of Poland by Nazi Germany, which ultimately resulted in the horrors of the Second World War. A place of remembrance has now been built close to one of the first battlegrounds.

The many exhibits in the new museum give new insights and show that there is still much to learn about the history of the Second World War. The exhibition organisers have collected around 35,000 objects, documents and photos, many of which come from private collections. Divided up across 18 thematic rooms, they lay bare the pain and terror of the occupation by Nazi Germany.

A REFLECTION OF PAIN

The museum building by Kwadrat – the local company who won the competition under the leadership of Daniel Libeskind – is located in what was the old town of Gdansk, which was completely destroyed during the bombardment and not rebuilt after the war. The central building structure bores into this historic ground like a piece of shrapnel and simultaneously opens it up for the exhibition, which begins in the basement.

MUSEUM OF THE SECOND WORLD WAR

Building owner: Museum of the Second World War

Architecture: Studio Kwadrat

Scenography: Tempora

Completed: March 2017

GEBERIT KNOW-HOW

Kolo urinal Felix

Kolo shower enclosure Style

Kolo washbasins Twins and Next

Geberit Mapress Stainless Steel and Carbon Steel supply systems



MUSÉE YVES SAINT LAURENT, MARRAKESH, MOROCCO

DRESSED IN BRICK



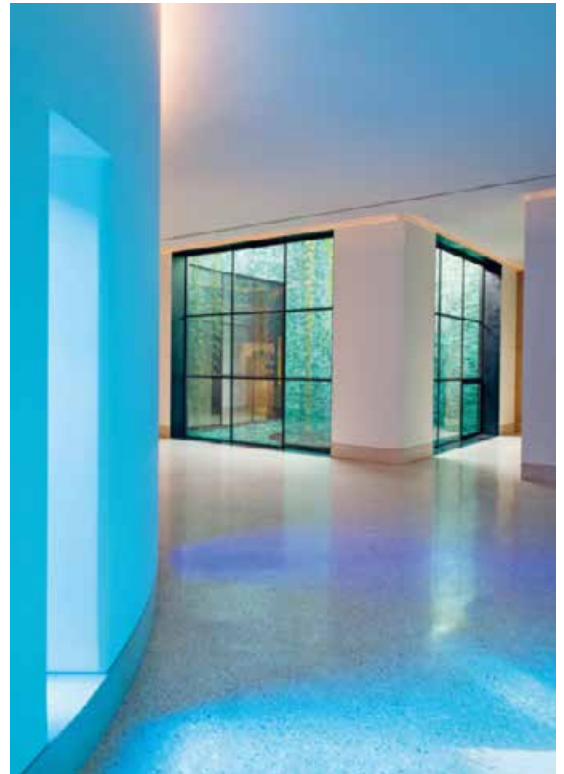
↑

The brick facade covers the museum like a piece of clothing. Inside, light is primarily provided by skylights.

When looking at the museum dedicated to Yves Saint Laurent, the contrast between the external appearance and what goes on inside is eye-catching – and intentional.

“The facade of the building appears as an intersection of cubes with a lace-like covering of bricks, creating patterns that recall the weft and warp of fabric. As with the lining of a couture jacket, the interior is radically different: velvety, smooth and radiant.”

STUDIO KO



Yves Saint Laurent spent many years in Morocco. The light and colours of the Maghreb inspired him in his designs, some of which – such as the first classic trouser suit for women (1967) – turned the fashion world upside down. In memory of the pioneering designer, the Musée Yves Saint Laurent in Marrakesh opened its doors in October 2017. The museum features rooms for permanent and temporary exhibitions, a library, an auditorium and a museum shop with cafe.

MUSÉE YVES SAINT LAURENT

Building owner: Fondation Pierre Bergé – Yves Saint Laurent

Architecture: Studio KO, Paris

Scenography: Christophe Martin
Architectes

Completed: October 2017

GEBERIT KNOW-HOW

Geberit Duofix installation system with
Alpha concealed cistern 8 cm

Geberit actuator plate Alpha10

CONSULTATION FOR SUSTAINABLE REAL ESTATE

"DOING IT RIGHT FROM THE START"



DANIEL KELLENBERGER

is a cultural and environmental engineer at the management and real estate consulting firm Intep – Integrale Planung GmbH in Zurich (CH). As Team Leader Life Cycle Management (LCM), his key roles include life cycle analyses (environmental effects of construction products and components, buildings, areas and municipalities), climate and energy concepts, and sustainability strategies.

When it comes to sustainable real estate, specialist consulting firms are needed who know what needs to be done to ensure a building is developed, built and operated in a sustainable fashion. Here, Daniel Kellenberger (Team Leader LCM) talks about the role that consultation plays in this process.

Mr Kellenberger, tell us more about sustainable real estate management.

Sustainable real estate management is an optimisation process in which a holistic approach is key – in other words, the entire planning right through to operation. This means that a building should be operated according to ecological, social and economical aspects and with a long-term perspective in mind along the entire building life cycle. All of these aspects are important – after all, we plan in order to make real estate fit for the future. This is why we hardly ever use the term “green building”, as this focuses too much on ecology for our liking.

Can you take us through a typical consultation process?

Ideally, we accompany the real estate (or its owner, architects or contractors) right from the outset of a project so that we can take the right steps at an early stage. Specific questions here include the following: Which is the right power supply? Can a heat pump operated with green electricity be used as a heating system? Can part of the underground floors be dispensed with in order to save a lot of grey energy? How can the building design be optimised in order to minimise energy losses? If these aspects are not given the necessary attention right at the outset, then it is often both difficult and expensive to correct them afterwards.

“When you build something, you always leave an ecological footprint. Our task as a consulting firm is to reduce this footprint.”

So you are not always there right from the beginning?

Usually, we only apply for consultancy work on sustainability after the contract has been awarded for the project itself. This is namely the time that the planners or architects need someone at their side in an advisory capacity in order to achieve a certain sustainability certification or simply to reach a specific sustainability standard.

In other words, once the building is completed, your work is done?

Not always. The importance of sustainable management for real estate is receiving increasing recognition. After all, sustainable real estate management not only includes planning, but also the maintenance and operation of an existing property.

From an economic point of view, what are the advantages of building real estate sustainably?

Economically speaking, there are several strong arguments for sustainable construction. Take the power supply, for example. If the energy source is ecological and – when possible – local and the demand is low, then you are less susceptible to price fluctuations on the energy market. Topics such as quality, durability and flexibility also need to be considered, for example, in case a building is converted later down the line. Above all, building sustainability pays off on a macroeconomic level. Added costs during the investment phase usually lead to significantly reduced costs in operation.

Which role do the sanitary products play in sustainable building?

Sustainable sanitary products usually impress thanks to low water consumption – an area where Geberit products excel. However, it also helps when a company produces environmental product declarations, as these can be used to demonstrate ecological quality. On the one hand, this allows manufacturers to optimise their processes. On the other hand, the installation of such products is also taken into account by some labels (e. g. LEED). If there are comparable products from different manufacturers, then environmental product declarations can also help in choosing a product that is more environmentally friendly.



The visit begins on the roof of the building, with breathtaking views of the Vézère valley.

CULTURE

INTERNATIONAL CENTRE FOR CAVE ART (LASCAUX IV),
MONTIGNAC, FRANCE

CAVE EXPERIENCE

In 1940, four teenagers discovered the Lascaux cave and the 15,000-year-old paintings on its walls. The new visitor centre recreates this moment. →





Faithful copies of paintings depicting a time when humans weren't yet the dominant force on earth are what make Lascaux IV so fascinating.



Following a delay due to the Second World War, this sensational find became a hit among visitors. However, the caves had to be closed to the public in 1963 in order to protect the fragile artwork. The story was continued with the search for ways of reproducing the original cave experience.

A HIGH-TECH COPY

Lascaux IV – designed by Snøhetta in close cooperation with the London-based studio Casson Mann – has taken the frustrating situation of not being able to access the cave and created something extraordinary. Using new 3D laser technology, the original paintings were scanned and then transferred painstakingly onto artificial resin imitations with the help of 25 artists from the Atelier des Fac-Similés du Périgord.

VOYAGE OF DISCOVERY

The absolute determination of the exhibition organisers to ensure authenticity is reflected in the presentation of the copied artefacts, including the corresponding sounds and microclimate. The guided tours focus on simulating the moment of discovery, with the portable multimedia guide enhancing the experience by coming in the shape of pocket lamps with augmented reality functions.



Visitors find themselves in the role of space explorers.

LASCAUX IV

Building owner: Conseil Départemental de la Dordogne

Architecture: Snøhetta, Oslo

Scenography: Casson Mann

Completed: December 2016

GEBERIT KNOW-HOW

Allia Diedro bathroom series

Allia Fontange bathroom series

Geberit PE piping system



Transferring the paintings onto artificial resin imitations took three years, after which there was an exact replica of all 1,900 designs.

CULTURE

KEUKENHOF, LISSE, THE NETHERLANDS

IN BLOOM



In terms of the number of visitors per day, Keukenhof is the most popular tourist attraction in the Netherlands. In its first season, the new entrance building from Mecanoo has welcomed well over one million people.

Located in Lisse in the Netherlands, Keukenhof registered 1.4 million visitors in 2017 – a new record. These figures are all the more impressive when you take into account that the “world’s most beautiful spring park” is only open for eight weeks of the year while the tulips are in bloom – from the end of March to May.

A CHALLENGING ROOF STRUCTURE

The new entrance area consists of two buildings, in which the cash desks, a restaurant, various shops and offices as well as the sanitary facilities are located. Particularly striking is the expansive wooden roof that covers both buildings and the zone in between them. Following a construction period of one year, the entrance area was ready for the hordes of visitors and – thanks to the Geberit roof drainage system – also for any heavy rain showers.

Geberit Pluvia ensures drainage of the large roof, with the pipes running inside the wooden beams.

KEUKENHOF

Building owner: Keukenhof
Architecture: Mecanoo, Delft
Completed: September 2016

GEBERIT KNOW-HOW

Geberit Duofix installation system
Geberit Sigma concealed cisterns 12 cm
Geberit Pluvia roof drainage system
Geberit PE drainage system
Geberit sanitary flush unit



↑

Following on from Centre Court, No. 1 Court at the All England Lawn Tennis and Croquet Club will now also be fitted with a retractable roof.

WIMBLEDON NO. 1 COURT, LONDON, UK

A SHELTERED GEM

NO. 1 COURT

Building owner: All England Lawn Tennis and Croquet Club

Architecture: Grimshaw, London

Completion: after going to press

GEBERIT KNOW-HOW

Geberit Pluvia roof drainage system

In 2009, the world-famous Centre Court at Wimbledon was equipped with a retractable roof. Since then, no tennis match in this stadium has had to be postponed because of the weather. Eight years later, No. 1 Court is now also undergoing a modernisation and also receiving a new roof that can be fully closed when it rains. Like with Centre Court, the tried-and-tested Geberit Pluvia roof drainage system is being used here. A total of 64 roof outlets and around 2,000 metres of piping are being installed in the movable roof elements. These ensure that the rainwater is quickly and reliably drained from the roof even during very heavy rainfall.

GEBERIT TAP SYSTEM

SLIM AND CLEVER

Electronic wall-mounted taps for washbasins are primarily used in highly frequented sanitary facilities in airports, shopping centres, schools and restaurants. Anchored securely, they have to carry out their tasks reliably and be easy to maintain. With these properties, who would have thought that they could also look attractive as well?



“Until now, electronic wall-mounted taps often caused a lot of headaches. You needed the perfect plumber and the perfect planner. There were issues with the stability, issues with maintenance, and all these meant the costs quickly added up. With the new Geberit system, the wall-mounted tap has become foolproof – it is much easier to install, and maintenance doesn’t take much time.”

CHRISTOPH BEHLING, PRODUCT DESIGNER
AT CHRISTOPH BEHLING DESIGN, LONDON



www.geberit.com/products →
Product range

←

The faculty has 32 specialist workshops for various art disciplines.

→

The new facility measures 14,800 m² and combines six institutes that were formerly spread all over the city.

FACULTY OF FINE ART, MUSIC AND DESIGN (KMD), BERGEN, NORWAY

ATELIER WITH SCOPE

Following Grieg Hall, the Faculty of Fine Art is the second-largest cultural institution in Bergen. As a place for meeting and holding events, the goal is for it to become a lively new hub in the district of Møllendal. →

INSTITUTION





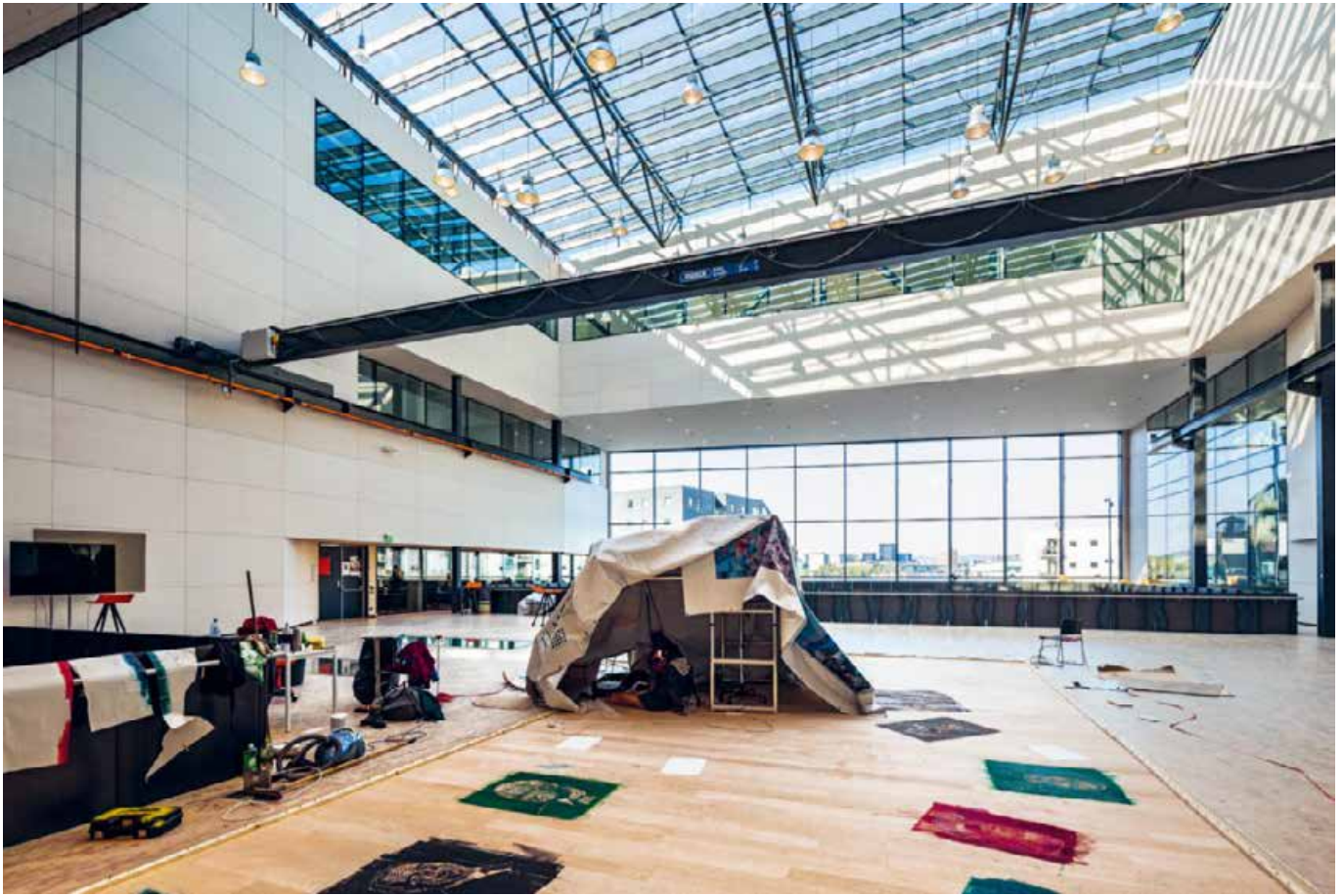
↑

350 students and lecturers now have ideal surroundings for learning and carrying out experiments under a single roof.

“It is a clean-cut, environmentally friendly and durable building focused on materials that will withstand the rainy climate of the Norwegian west coast and a high degree of wear and tear.”

SNØHETTA





↑

The 23-metre-high project hall is the focal point of the faculty and offers an ideal, versatile platform for creative minds.

KMD

Building owner: Statsbygg
 Architecture: Snøhetta, Oslo
 Completed: October 2017

GEBERIT KNOW-HOW

Geberit Pluvia roof drainage system
 Geberit Silent-db20 drainage system
 Geberit Mepla supply system

The 19,000 m³ project hall is at the heart of the new Faculty of Fine Art at Bergen University. Here, teaching and research engage in a dialogue with the public. The versatile space can be used by the young artists to present their works to an interested audience.

WHERE OPENNESS IS KING

The project hall has a large glass front that faces out onto a public square. As the concept from Snøhetta signals, there is no fear of contact here. Around the hall, 32 modern workshops house the whole range of art disciplines, from woodwork and ceramic design through to a photo studio.

FROM ROOF TO TANK

The creative rooms are consciously kept functional and austere. Inside the building, there are plenty of quiet areas where administrative tasks can be completed and meetings can take place. Below the terrace – where a cafe is located – a tank has been installed that can be filled with up to 90 litres of rainwater per second. Thanks to Pluvia, this rainwater is drained efficiently from the 4,100 m² roof.

The complex includes a sports hall with 3,500 seats, another one on two levels, a beach sports arena, a fitness studio and a martial arts dojo.

SPORTCAMPUS ZUIDERPARK, THE HAGUE, THE NETHERLANDS

A SHIMMERING BAND



SPORTCAMPUS ZUIDERPARK

Building owner: Municipality of The Hague,
The Hague University

Architecture: FaulknerBrowns Architects,
Newcastle-upon-Tyne

Completed: June 2017

GEBERIT KNOW-HOW

**Geberit Mapress Copper & Carbon Steel
supply systems**

Geberit Pluvia roof drainage system

Geberit PE drainage system

Geberit Duofix installation system

Geberit actuator plate Sigma20

Sphinx 300 Rimfree toilet type 24

Located on the site of the former stadium of ADO Den Haag, a new sports complex with changeable facade and an array of possible uses is attracting a lot of attention.

If you take a walk through the Zuiderpark, you are immediately confronted by an optical illusion. This is due to the band stretching around the new sports campus in The Hague, which is made up of brightly shimmering metal panels whose reflection gives the impression of movement.

A WEALTH OF SPORTS

The symbolism matches the sheer wealth of sports and activities that take place here. For example, the campus is not only a training hub and venue for elite sport, but also a training centre thanks to its sports medicine facilities and training rooms. This is in addition to the sports halls, a fitness studio and a martial arts dojo, which are also available for recreational sports.



BIBLIOTHÈQUE ALEXIS DE TOCQUEVILLE, CAEN, FRANCE

STRIKING A BALANCE

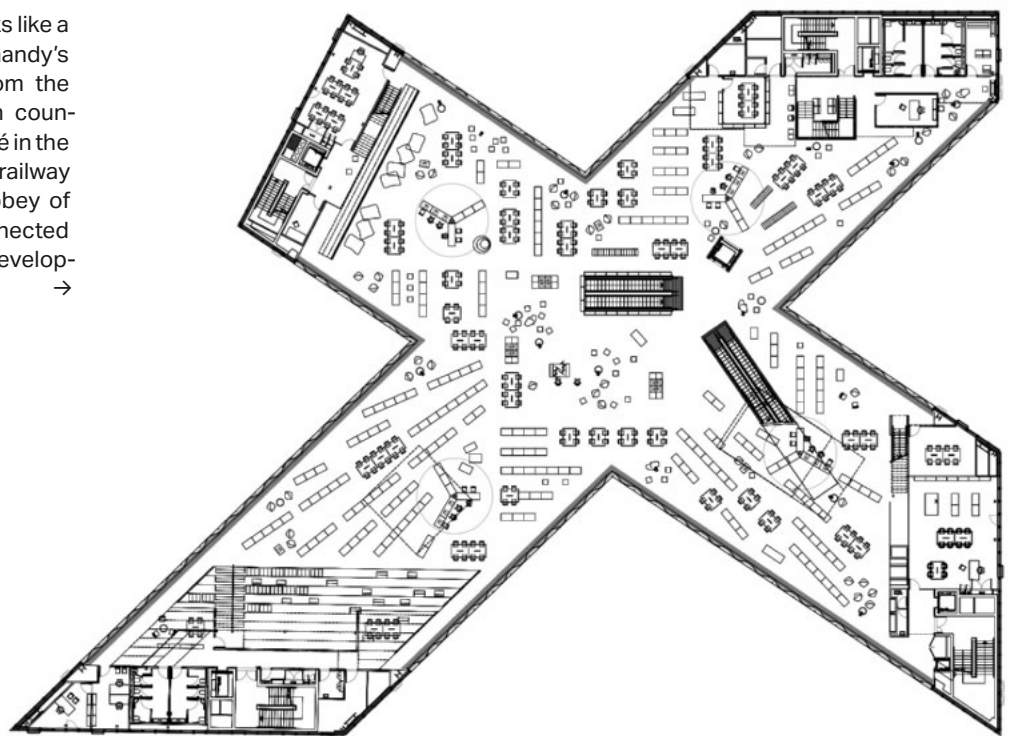
Following on from the Central Library in Seattle, the second library built by the Office for Metropolitan Architecture (OMA) is very exact when it comes to finding its most important urban references.



BIBLIOTHÈQUE ALEXIS DE TOCQUEVILLE
 Building owner: Communauté urbaine Caen la Mer
 Architecture: OMA
 Opened: January 2017

GEBERIT KNOW-HOW
 Allia Latitude Rimfree toilet
 Allia Lovely Rimfree toilet
 Geberit Duofix installation system

Viewed from above, the library looks like a cross whose axes connect Normandy's two most important buildings from the Romanesque period with modern counterparts. The Abbey of Sainte-Trinité in the north is thus connected with the railway station in the south, while the Abbey of Saint-Etienne in the west is connected with the most important urban development area in the east. →

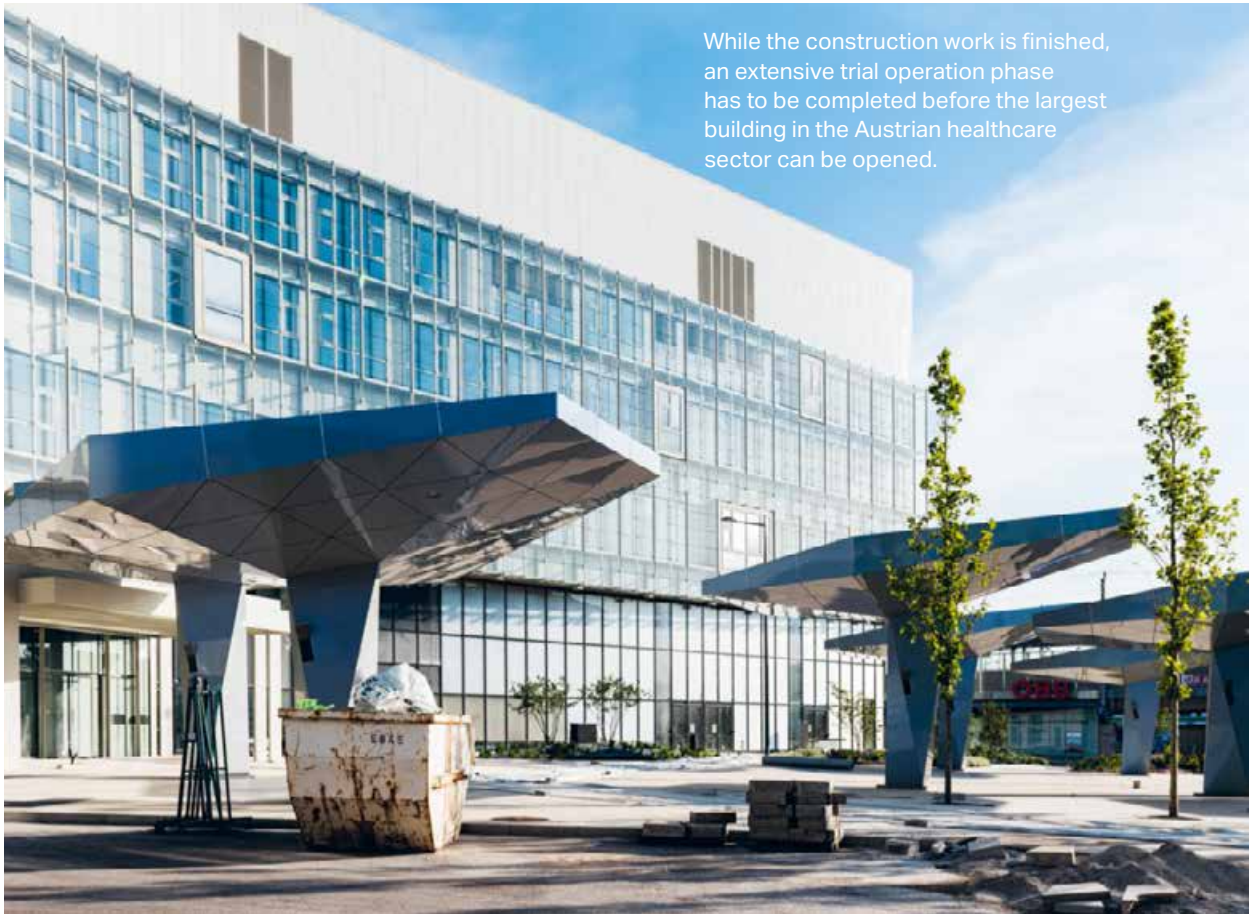




UNINTERRUPTED VIEWS

The wings of the library are dedicated to the four disciplines human sciences, science and technology, literature, and the arts. The fundamental reference points in the urban context as detailed in the building concept are ensured thanks to uninterrupted views through the large windows in the reading room.

Inviting transparency: the library designed by OMA is located on the Presqu'île, a peninsula that extends from the city centre all the way to the English Channel.



While the construction work is finished, an extensive trial operation phase has to be completed before the largest building in the Austrian healthcare sector can be opened.

VIENNA NORTH HOSPITAL, VIENNA, AUSTRIA

REHABILITATION IN STYLE

VIENNA NORTH HOSPITAL

Building owner: City Administration of Vienna, Vienna Association of Hospitals (KAV)

Architecture: Albert Wimmer ZT GmbH, Vienna

Completion: after going to press

GEBERIT KNOW-HOW

Geberit Mapress Stainless Steel supply system

Geberit HDPE drainage system

Geberit Pluvia roof drainage system

Geberit Sigma concealed cistern 12 cm

Geberit WC flush control with electronic flush actuation

Geberit urinal flush control with electronic flush actuation

Keramag Renova Nr. 1 Plan washbasins

Keramag Kind toilet

With an investment of one billion euros, Vienna North Hospital is the largest health-care project in Austria. The construction work on the new building – where 46,000 inpatients and 250,000 outpatients will be treated each year – is almost completed. However, due in large part to the complexity of the building's technical installations, the first patients are only expected to be admitted at the end of 2018.

The most important internationally recognised certificates for green building

BREEAM

The Building Research Establishment Environmental Assessment Method was developed in Great Britain in 1990 and is the oldest certification system used around the world in the area of green building. The criteria take into consideration the impact on a global, regional, local and building-internal level.

Certification levels: "Pass", "Good", "Very Good", "Excellent" and "Outstanding".

LEED

The Leadership in Energy and Environmental Design certificate was developed in the USA in 1998 based on the BREEAM standard. It defines a range of standards for environmentally friendly, resource-conserving and sustainable building.

Certification levels: "Certified", "Silver", "Gold" and "Platinum".

DGNB

The German Sustainable Building Certificate was launched in 2009 and has since been developed into a comprehensive certification system for various building uses and districts. The fulfilment of up to 40 sustainability criteria from the quality sections ecology, economy, sociocultural and functional aspects, technology, process work flows and site is certified.

Certification levels: "Bronze" (for existing buildings), "Silver", "Gold" and "Platinum".

Minergie

The Minergie label was developed in Switzerland in 1994 and is a globally protected trademark in the area of sustainable building. To achieve certification, a compact, well-insulated building shell is required, complemented by an automatic ventilation system with heat recovery.

Certification levels: Minergie, Minergie-P, Minergie-A and Minergie-Eco.

KfW Efficiency House 70

The low-energy house certification was established in Austria in 2009. This describes the energy standard that regulates the heating requirement of both new buildings and renovated old buildings. To achieve certification, energy requirements must be significantly below the maximum permissible level.

Low-energy house type A+, type A and type B

The low-energy house certification was established in Austria in 2009. This describes the energy standard that regulates the heating requirement of both new buildings and renovated old buildings. To achieve certification, energy requirements must be significantly below the maximum permissible level.

ÖGNI

The Austrian Sustainable Building Council was established in 2009 and is based on the standards of the DGNB. In 2012, the blueCARD – which in addition to assessing the building itself also evaluates how it is used and managed – was subsequently introduced for existing buildings.

Certification levels: "Bronze" (for existing buildings), "Silver", "Gold" and "Platinum".

HQE

The Haute Qualité Environnementale certificate was launched in France in 1992. This standard focuses on two aspects – the ecological management of construction projects and sustainable building design. To obtain HQE certification, obligatory categories such as energy management, water efficiency and freedom from pollutants must be covered.

Green Mark

The BCA Green Mark Scheme was launched in Singapore in 2005. The assessment criteria include energy efficiency, water efficiency, environmental protection, indoor environmental quality as well as other green features and innovations.

Certification levels: Certified, "Gold", "GoldPlus" and "Platinum".

Australia

Geberit Pty Ltd
Macquarie Park, NSW 2113
T +61 2 9889 7866
www.geberit.com.au

Austria

Geberit Vertriebs GmbH & Co KG
3140 Pottenbrunn/St. Pölten
T +43 2742 401 0
www.geberit.at

Belgium

Geberit nv
1830 Machelen
T +32 2 252 01 11
www.geberit.be

Bosnia and Herzegovina

Geberit prodaja d.o.o.
– Representative Office BIH
71000 Sarajevo
T +387 33 64 68 06
www.geberit.ba

China

Geberit Shanghai
201802 Shanghai
T +86 21 6185 3188
www.geberit.com.cn

Croatia

Geberit prodaja d.o.o., Ruše
Subsidiary Office Croatia
10090 Zagreb
T +385 1 38 678 00
www.geberit.hr

Czech Republic

Geberit spol. s r.o.
190 00 Praha 9
T +420 284 689 676
www.geberit.cz

Denmark

Geberit A/S
8520 Lystrup
T +45 8674 1086
→ www.geberit.dk

Egypt

Geberit International Sales AG
– Representative Office Egypt
Heliopolis – Cairo
T +20 2 22 598 343
www.international.geberit.com

Finland

Geberit Oy
01530 Vantaa
T +358 10 662 300
www.geberit.fi

France

Geberit s. a. r. l.
77215 Avon Cedex
T +33 1 60 71 66 66
www.geberit.fr

Germany

Geberit Vertriebs GmbH
88630 Pfullendorf
T +49 7552 9340
www.geberit.de

Great Britain/Ireland

Geberit Sales Ltd
Geberit House
Warwick
Warwickshire CV34 6NH
T +44 1926 516 800
www.geberit.co.uk

Gulf Region, Dubai UAE

Geberit International Sales AG
– Representative Office &
DMCC Branch
T +971 4 447 0914
www.geberit.ae

Hungary

Geberit Kft
1117 Budapest
T +36 1 204 41 87
www.geberit.hu

India

Geberit Plumbing Technology
India Private Limited
Bangalore 560 001
T +91 80 3925 1138
www.geberit.in

Israel

Geberit International Sales AG
– Representative Office Israel
4486200 Tzur Yigal
T +972 9 886 6625
www.geberit.co.il

Italy

Geberit Marketing e
Distribuzione SA
6928 Manno
T +41 91 611 92 92
www.geberit.it

Kuwait

Geberit International Sales AG
– Kuwait Branch
c/o Ayman Jawhary
T +965 6672 8102
www.geberit.ae

Luxembourg

Geberit b. v. Luxembourg
3850 Schifflange
T +352 54 52 26
www.geberit.lu

Netherlands

Geberit B. V.
Nieuwegein
T +31 30 605 77 00
www.geberit.nl

Norway

Geberit AS
1470 Lørenskog
T +47 67 97 82 00
www.geberit.no

Poland

Geberit Sp.z o.o.
02-676 Warsaw
T +48 22 376 0102
www.geberit.pl

Portugal

Geberit Tecnologia
Sanitária, S. A.
1600-485 Lisboa
T +351 21 781 5100
www.geberit.pt

Qatar

Geberit International Sales AG
– Qatar Branch
Maysaloun St, West Bay
Doha
T +974 4020 6055
www.geberit.ae

Romania

Geberit SRL
050564 Bucharest
T +40 21 330 30 80
www.geberit.ro

Russian Federation

Geberit RUS LLC
129110 Moscow
T +7 495 783 83 30
www.geberit.ru

Saudi Arabia

Geberit International Sales AG
– KSA Branch
21332 Jeddah
T +966 12 668 3468
www.geberit.com.sa

Serbia, Montenegro, Macedonia

Geberit prodaja d.o.o. –
– Representative Office Serbia
Montenegro and Macedonia
11000 Belgrade
T +381 11 30 96 430
www.geberit.rs

Singapore

Geberit South East Asia Pte Ltd
339509 Singapore
T +65 6250 4011
www.geberit.com.sg

Slovakia

Geberit Slovensko s.r.o.
82108 Bratislava
T +421 2 4920 3071
www.geberit.sk

Slovenia

Geberit prodaja d.o.o.
2342 Ruše
T +386 1 586 22 00
www.geberit.si

South Africa

Geberit Southern Africa
Linbro Park
2144 Johannesburg
T +27 11 444 5070
www.geberit.co.za

South Korea

Geberit South East Asia Pte Ltd
Nonhyun-Dong, Kangnam-Ku
Seoul
T +82 2 543 4166
www.geberit.co.kr

Spain

Geberit S. A. U.
08902 L'Hospitalet de Llobregat
Barcelona
T +34 902 170 635
www.geberit.es

Sweden

Geberit AB
295 22 Bromölla
T +46 456 480 00
www.geberit.se

Switzerland

Geberit Vertriebs AG
8645 Jona
T +41 55 221 61 11
www.geberit.ch

Thailand

Geberit South East Asia Pte Ltd
10120 Bangkok
T +66 85 3685 829
www.geberit.com.sg

Turkey

Geberit Tesisat Sistemleri
Ticaret Ltd.
34752 Ataşehir/Istanbul
T +90 216 340 82 73
www.geberit.com.tr

Ukraine and Belarus

Geberit Trading LLC
04073 Kiev
T +38 044 492 97 41
www.geberit.ua
www.geberit.by

USA

The Chicago Faucet Company
IL-60018 Des Plaines
T +1 847 803 5000
www.chicagofaucets.com

Other Geberit markets

Geberit International Sales AG
8640 Rapperswil-Jona
T +41 55 221 62 00
www.international.geberit.com

ADDED VALUE BY DESIGN

The name Geberit stands for comprehensive know-how in sanitary technology as well as in bathroom equipment and furnishings.



Geberit is a one-stop shop for perfect solutions that are known for their quality and durability. Geberit continually makes targeted investments in research and development. Our customers benefit from this in a very direct way: the know-how of proven specialists from a wide range of disciplines can be found in every Geberit product. And this know-how is regularly shared: Geberit conducts an intensive dialogue with its partners in the construction industry around the globe and also organises countless information and training events.

Geberit is a system provider. In other words, every product that bears the company logo has been tested and optimised within its overall context. This applies to the sanitary technology behind the wall – such as concealed cisterns, installation elements and all the piping systems – as well as to the products in front of the wall, such as the bathroom series with their ceramic sanitary appliances and bathroom furniture.

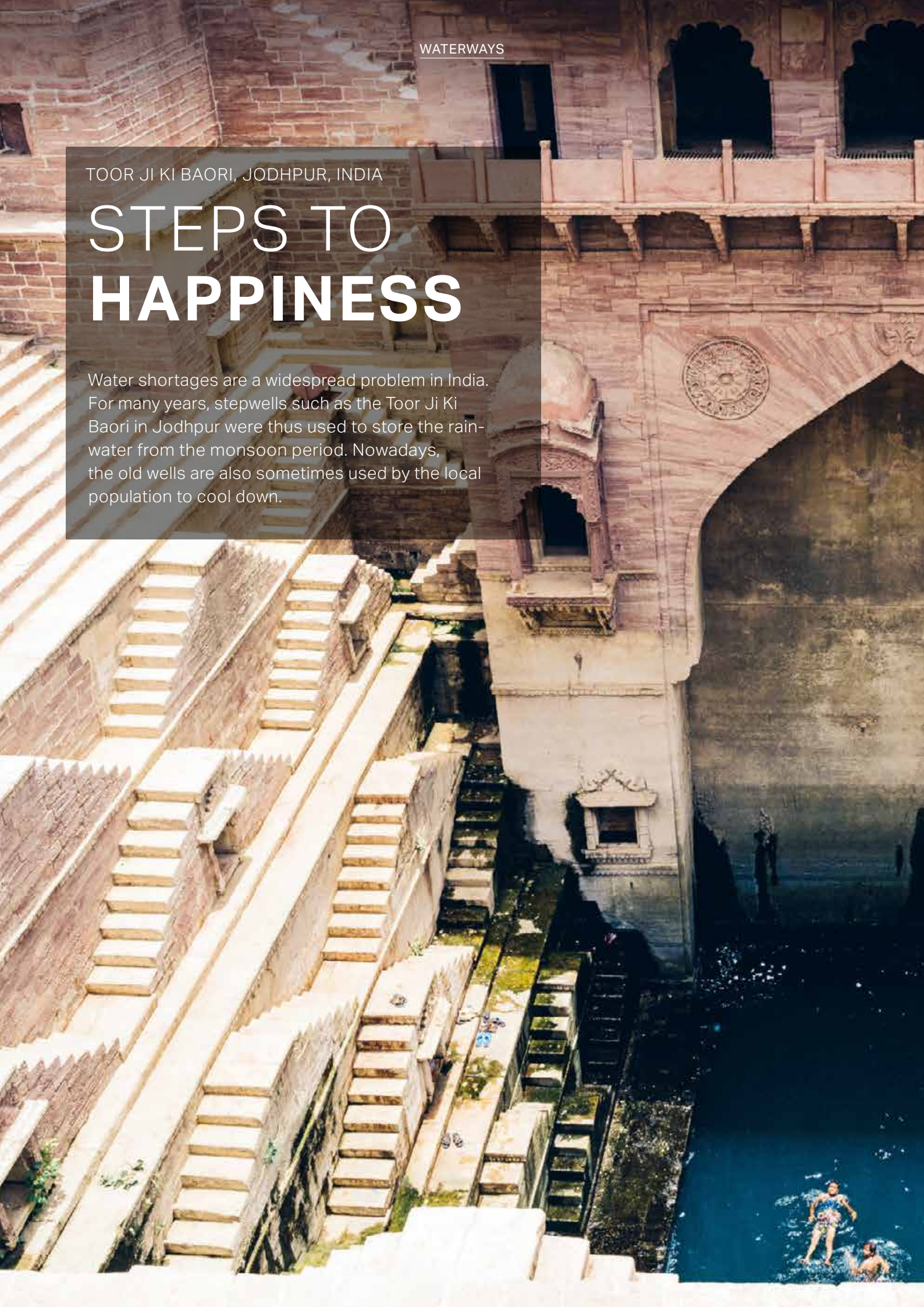


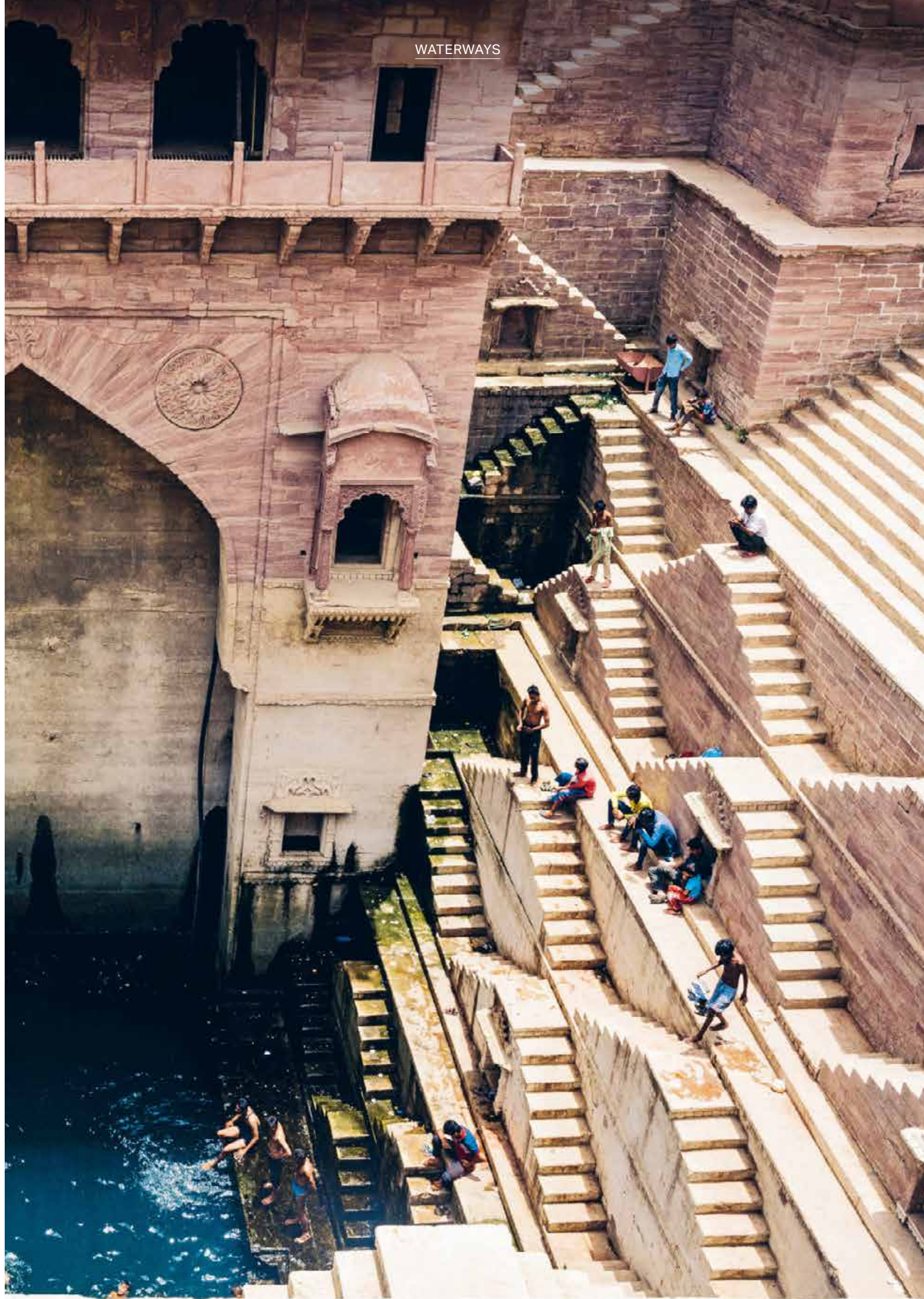
www.geberit.com/products →
Product range

TOOR JI KI BAORI, JODHPUR, INDIA

STEPS TO HAPPINESS

Water shortages are a widespread problem in India. For many years, stepwells such as the Toor Ji Ki Baori in Jodhpur were thus used to store the rain-water from the monsoon period. Nowadays, the old wells are also sometimes used by the local population to cool down.





PUBLISHED BY
Geberit International AG
Corporate Communications
Schachenstrasse 77
CH-8645 Rapperswil-Jona

www.geberit.com

