

KNOW -HOW

■ GEBERIT

Twyford

CUSTOMER MAGAZINE
JUNE 2019

ELEGANT, FLEXIBLE AND
OF HIGH QUALITY

SMYLE
BATHROOM
SERIES

A MILESTONE IN BUILDING
DRAINAGE ENGINEERING

SUPERTUBE
TECHNOLOGY

ON THE COVER

The Geberit Smyle bathroom series has been carefully redesigned and can be mixed and matched in bathrooms of all sizes.

CONCEPT/DESIGN/REALISATION

Linkgroup AG, Zürich
www.linkgroup.ch

PHOTOS

Stefan Thurmann (cover,
pages 6–11, 24–27)
Stefan Schmid, CaDesign form (page 12)
Caro Becker (pages 14–15)
Ben Huggler (pages 18, 28–31, 36–37)
© Hufton Crow (20–21)
The Fontenay (pages 22–23)
Starčević/fotogloria (pages 38–41)
Amir Amido Zamane (pages 44–45)

NUMBER OF COPIES

5,000. Issued: quarterly.
The reproduction of individual articles,
in part or in full, is subject to approval
from the editorial staff.

6 PRODUCTS & SOLUTIONS

THE NEW GEBERIT
AQUACLEAN SELA

38 PARTNERSHIP

LARGE-SCALE
CONSTRUCTION
PROJECT IN
BELGRADE

5 News

10 New DuoFresh odour
extraction unit

18 MasterFix for Mepla

19 New elbow tap connector

20 Reference object in Scotland

24 Redesign of the Smyle
bathroom series

32 SuperTube technology

42 Energy-retaining valve



Mark Larden
Managing Director

DEAR CUSTOMERS,

WHEN JOHN BOYD DUNLOP PATENTED THE PNEUMATIC TYRE IN 1888, HE HADN'T REINVENTED THE WHEEL, BUT HE HAD CERTAINLY REVOLUTIONISED IT GREATLY. THE ADVANTAGES OF HIS INVENTION WERE CLEAR.

Four years ago, Geberit presented the new shower toilet AquaClean Mera to the industry. The most striking aspect was the completely innovative inner geometry of the WC pan, which was unlike anything that had been seen before. The advantages were also immediately apparent – no other toilet flushes as quietly and thoroughly.

Geberit is now once again presenting an innovation that you understand at first glance but that is difficult to describe in words, namely SuperTube technology. It will be primarily used for building drainage in high-rise buildings. We hope you will follow our journey to change the way the industry approaches high rise drainage.

GEBERIT MAPRESS

BIGGER PERFORMANCE. BETTER FOR BUSINESS.



**KNOW
HOW
INSTALLED**

No wonder so many business-minded installers are switching to Geberit Mapress. Quick and easy to install, with no hot works or costly one-hour cooling down period, our advanced pipe fitting solutions offer leak-free, hassle-free performance and unrivalled support. By anyone's standards, that's what you call a result.



CIBSE CPD – PRECISION CARBON STEEL: MAKE IT RIGHT

Carbon steel pipework has been applied in building services systems for almost 200 years. If employed in an appropriate application – and maintained properly – such pipework systems are set for a long and productive life. Press-fit systems, which have been commercially available for more than 50 years, can provide a speedier install time than the traditional jointing methods (such as screwing or welding) and do not require any hot works or screw cutting. As with all building services systems, the longevity and effectiveness of a carbon steel pipework press-fit system will be dependent on proper installation, operation and maintenance. We've created a CPD to help the industry install and use this system most effectively.

www.geberit.co.uk/services/training/cpd-training/



**GEBERIT BRINGS SENSORY BATHROOM INSPIRATION TO CLERKENWELL DESIGN WEEK
8 APRIL 2019**

Luxury bathroom designer Geberit will be joining the industry at Clerkenwell Design Week 2019 (21–23 May) with a packed programme of activity to educate, inform and support those planning washroom spaces.

As well as launching five exciting new products, Geberit will be offering a wealth of learning opportunities to get architects and designers thinking about multi-sensory experiences in bathroom projects, including a guest talk, white paper and new CPD presentation.

www.geberit.co.uk/about-us/press/



GEBERIT ON TOUR

Geberit On Tour is back for 2019 and better than ever! We will be touring right across the UK & Ireland. From the Shetlands to Cornwall, we visit local merchants to showcase our new and existing products and share our innovation and know-how with you to give you and your business the edge.

Find out about a range of innovations including our Dynamic Duo offering, how Geberit Mapress can improve the safety of your work as well as save you time and take a look at our brand-new product for 2019 – Geberit Silent-PP, a push fit drainage system!

Take a look below on our On Tour locator to find out when we are near you.

www.geberit.co.uk/services/campaigns/on-tour/



There is nothing to indicate that this simple, yet elegant ceramic body contains a comfortable shower toilet – the new Geberit AquaClean Sela.

GEBERIT AQUACLEAN SELA

GREATER COMFORT AND EVEN MORE BEAUTIFUL

Since its market launch in 2013, the Geberit AquaClean Sela shower toilet has been impressing plumbers with its easy and speedy installation. The AquaClean product family is now being updated with the addition of the new AquaClean Sela, which offers more functions and boasts an even more elegant design.

Thanks to its timeless, puristic design, the Geberit AquaClean Sela shower toilet has been performing successfully on the market and proving very popular among building owners and end users for the past six years. Plumbers are also impressed by the product thanks to its easy and speedy installation. Geberit is now replacing the old AquaClean Sela with a new model. Thanks to its elegant design and clear lines, the Christoph-Behling-designed shower toilet suits virtually any bathroom environment.

CLEANING WITH WATER

The new AquaClean Sela is equipped with innovative technology, made of high-quality product materials and offers the classic personal hygiene functions of a Geberit shower toilet. This includes the unique WhirlSpray shower technology, which ensures extremely gentle and thorough cleaning. The shower toilet's subdued orientation light shows the way to the toilet at night, making it easier for the user to go back to sleep afterwards. All inputs can be made with one hand via the intuitive remote control. One touch of a button is all that is required to call up the personal settings. Furthermore, the functions can also be comfortably controlled via smartphone using the Geberit app. →

“We revised the timeless, puristic design language for the new Geberit AquaClean Sela. The elegant shower toilet was also equipped with additional, optimised functions and now offers even greater comfort.”

Margit Harsch
Head of Geberit AquaClean



↑
The rimless WC ceramic appliance can be cleaned easily.



↑
All the shower toilet technology can be quickly and easily installed or removed.

“Like all our shower toilets, we developed the AquaClean Sela with Swiss know-how. We know the operating conditions with very different water qualities, from extremely hard water to water with very low conductivity. All the AquaClean’s technological components are designed with this in mind.”

Armin Gierer
Head of Product Line Geberit AquaClean



←
The Geberit AquaClean Sela can be installed by a single plumber with ease.

PERFECT HYGIENE

The Geberit AquaClean Sela is equipped with the very quiet and effective TurboFlush flush technology. This technology, which makes cleaning much easier and ensures perfect hygiene, has already successfully proven itself on the market with the introduction of the AquaClean Mera. Thanks to the optimal way in which the water is guided through the toilet, the entire WC ceramic appliance is flushed out. Because it does not have a rim, there are also no hidden places where deposits can build up. Furthermore, the easy-to-care-for, scratchproof special glaze Geberit KeraTect® ensures that the ceramic surfaces enjoy many years of protection. The virtually non-porous, extremely smooth surface protects against bacteria and germs and can be kept clean easily and efficiently. The QuickRelease function, which enables the WC seat and lid to be easily removed with a flick of the wrist, also makes cleaning child's play.

NEW CONTINUOUS FLOW HEATER

The AquaClean Sela features a further innovation in the form of the continuous flow heater, which was specially developed by Geberit. This device not only ensures that warm water is quickly available, but also that the temperature remains constant throughout the entire spray time. Unlike a conventional boiler, the continuous flow heater also ensures that only fresh water is used for the shower procedure and that only the amount of water that is required is heated up. Another benefit is that the continuous

flow heater is specially designed for hard water. The integrated, automatic descaling function removes deposits from all water-bearing components, meaning the performance of the AquaClean Sela is completely restored. This ensures the shower toilet remains perfectly functional for years to come.

EASY TO INSTALL AND CARE FOR

As is standard with Geberit appliances, the new AquaClean Sela can be quickly and easily installed by a single installer. All the technical components are integrated in a compact functional unit, which is inserted into the ceramic sanitary appliance from above and also allows easy access in case of service. The ceramics fastening can therefore be conveniently accessed when installing the shower toilet.

The Geberit AquaClean Sela is designed so that ongoing care and maintenance can be carried out by the customer directly. In the event of questions or problems, Geberit also offers reliable customer service that ensures the operability of the shower toilets. Furthermore, Geberit guarantees a long availability of up to ten years on all spare parts.

INNOVATIVE ODOUR EXTRACTION UNIT FOR TOILETS

ALSO A RETROFIT SOLUTION

The new Geberit DuoFresh module can be installed in all concealed cisterns from the Sigma range. In addition to an air filtration system, it also has an orientation light and an insert for in-cistern blocks. Under certain conditions, existing toilet systems can also be retrofitted with the odour extraction unit.

In principle, it is easiest to include the Geberit DuoFresh module when the sanitary technology is being installed, i.e. when building or renovating the bathroom. However, this is often not done in practice for a number of reasons. What is undeniable, however, is that end users appreciate the effects of comfort functions such as odour-free, fresh air in a modern, new bathroom.

PROPERTIES AND FUNCTIONS

With this in mind, Geberit developed a new odour extraction module. It is suitable for new buildings and renovation projects and can also be retrofitted. A concealed cistern from the Geberit Sigma range is a technical requirement. Retrofitting is possible with the Geberit Sigma concealed cistern 12 cm (manufactured from 2008) and the Geberit Sigma concealed cistern 8 cm (manufactured from 2016).

The Geberit DuoFresh module removes unpleasant odours directly from the WC ceramic appliance. It extracts the air through the flush pipe and flush valve, purifies it using a ceramic honeycomb filter and then returns it to the room. It also offers the following functions:

- LED orientation light behind the actuator plate for a discreet lighting when going to the toilet at night.
- Insert for in-cistern sticks. These sticks colour the flush water blue and produce a pleasantly fresh fragrance.

INSTALLATION AND CONSUMABLES

Installation is simple and well thought out. The only requirement is a connection to the 230 V power supply system:

- With the exception of the transformer, all components are installed through the cistern's service opening. In line with regulations, the transformer is stored elsewhere – such as in a flush-mounting box with service opening.
- The transformer is sold under a separate article number.
- Apart from a few exceptions, all actuator plates from the Sigma range can be combined with the Geberit DuoFresh module. Actuator plates from older series have to be replaced in the event of retrofitting.
- Thanks to a special mechanism, the actuator plate can be opened with a flick of the wrist, giving easy access for replacing consumables.
- The insert for in-cistern sticks is located in an easily accessible position behind the actuator plate.
- The ceramic honeycomb filter is also easy to access and can be replaced by the end user.
- The intensity of the orientation light and the length of time it remains on can be personalised by the end user via app.

Both the ceramic honeycomb filter and the in-cistern sticks can be ordered via the Geberit Webshop or from your plumber at any time.

BASIC MODEL

The Geberit DuoFresh module is also available as a basic model without a proximity sensor and orientation light. It is switched on and off manually via a power switch installed by an electrician (coupled with the light switch in the bathroom, for example).

→
The Geberit DuoFresh module contains a discreet orientation light for showing the way to the toilet at night.



←
The ceramic honeycomb filter and Geberit DuoFresh sticks are easily accessible.



SIGMA50

THE NEW ELEGANCE

Geometric clarity combined with dynamic curves: the further development of the popular Geberit actuator plate Sigma50 sees a new elegance enter the bathroom.

The two ergonomic buttons for activating the dual flush remain characteristic features of the Geberit actuator plate Sigma50. Minor adjustments to the dimensioning of these raised, curved buttons lead to reflections that give the Sigma50 an even lighter appearance.

The actuator plate itself is frameless and available in different colours and materials, the latter ranging from glass, plastic and metal right through to slate. The actuator plate can be optionally equipped with the Geberit DuoFresh module for odour extraction. Other functions to choose from include a night-time orientation light and an insert for in-cistern sticks.



↑

A customised version and one made of slate are just two of the options when it comes to the Sigma50.

GEBERIT PRO

AN INDISPENSABLE BUILDING **SITE APP**



Update: Geberit has developed its Geberit Pro app further.

Geberit has developed its building site app further and added some attractive new functions. The app makes it easier for sanitary professionals to quickly find the information that is relevant to them.

More intuitive design and new functions: by updating the app, users can now set individual product bookmarks, enabling the stored content to be found again in next to no time. The app also remembers the products, spare parts and documents the user visited last and displays them accordingly.

SIMPLIFIED SEARCH

All the products in the catalogue – plus the corresponding product videos – can be easily accessed using the product finder or the barcode scanner. In combination with the greatly simplified full-text search, the Geberit Pro app is ideal for everyday use on the building site. With just a few clicks, plumbers have exactly the information they require at hand. This includes data from the various catalogues, details on

products and their spare parts and – depending on the market – specially provided tools such as the pipe diameter calculator.

THE GEBERIT PRO APP IS AVAILABLE FREE OF CHARGE IN THE GOOGLE PLAY STORE AND APPLE APP STORE.



iOS



Android

GEBERIT MEPLA

A PROVEN SUPPLY SYSTEM **IN ACTION**

When it comes to a building's drinking water installation, the Geberit Mepla supply system is the first choice for many plumbers. Mepla pipes are durable, flexible and yet inherently stable. And the pressfittings have been proving an exceptional solution for more than two decades.



Thanks to the pressing jaw guide on the fitting, the pressing jaw can be placed accurately at the intended position. A failed pressing sequence is virtually impossible.



With the right tool, a Mepla pipe is cut to length and deburred in next to no time.

In cities, centrally located apartments are highly sought after, but mostly in short supply. It is not unusual for dozens of potential tenants to show up for a viewing. In addition, many of the advertised apartments are in need of modernisation. Modern properties in central locations are in great demand. One building owner recognised this opportunity and renovated his property in Lucerne (CH).

PRETTY CITY APARTMENT

In the immediate vicinity of the university and the main railway station, an old six-storey property – including the bathrooms – is undergoing a complete renovation. When this project is completed, 36 top-quality studio apartments with a floor plan of 22.5 m² will be available for rent. The small but functional floor plans appeal to professional individuals who prefer a modern home to a simple dwelling. The schedule for the renovation work is tight. Delays on the building site are therefore a no go. Craftsmen from the various trades sometimes work in the same room at the same time across the six floors. In the bathroom, the plumbers from End AG are laying water supply lines. The bathroom has an area of just 3.3 m², which is in and of itself →



THREE-LAYER PIPE

Geberit Mepla consists of three layers: the outer plastic layer, which is made of high-density polyethylene, provides protection against corrosion and mechanical damage. In addition to making the pipe stable and bendable, the central aluminium layer also forms a barrier against diffusion. The inner layer, which is made of polyethylene, is corrosion-resistant and food-safe. Mepla therefore meets all requirements when it comes to drinking water quality.



↑

Wide range: with pipe dimensions of 16 mm to 75 mm and a selection of around 450 fittings made of polyvinylidene fluoride (PVDF), gunmetal and brass, virtually any installation task can be carried out.

“The quality features of Mepla continue to convince us.”

Markus End
General manager of End AG

not an uncommon size in small Swiss rental apartments. When designing these rooms, every centimetre therefore counts – beginning with the installation technology and laying the pipes behind the wall.

THE IMPORTANCE OF QUALITY

Markus End, general manager of the plumbing and heating company End AG, convinced the sanitary engineer of the advantages of the multilayer pipe Geberit Mepla. “As part of our company’s ISO certification, we compared various pipe materials – including Mepla. The quality features of Mepla continue to convince us,” explains Markus End. “In Geberit, we also have a partner that we have dealt with on an equal footing for decades and is always on hand to advise us when necessary. This is something we greatly appreciate.”



UNMISTAKABLE DESIGN

In the hustle and bustle of the building site, it can happen that a fitting is incorrectly pressed or even overlooked completely. When developing the Mepla fittings, ensuring that they are easy to work with on the building site was a top priority.

- Connecting the pipe end and the fitting until the stop position is reached is child's play.
- When pressing, the pressing jaw is placed at the intended position. Thanks to the jaw guide, the pressing jaw cannot slip off.
- Special cams prevent unpressed fittings from slipping out of the pipe during installation.

In the dimensions 16 mm and 20 mm, the pipes can be easily bent by hand without damaging them. This is thanks to the homogeneous, longitudinally welded aluminium layer. The smoothly formed weld seam guarantees the highest possible degree of safety and quality. This gives the pipe stability and also makes it bendable. This bendability is a major advantage if rapid progress is needed. Larger diameters of up to 50 mm can be bent using a compact bending device. The bendability of the pipe material means that fewer fittings need to be installed, which results in considerable time and material savings. Because Mepla pipes are available pre-insulated, plumbers also save time when insulating. "Insulation has key advantages," explains Michael Venetz, a plumber at End AG. "It minimises heat loss and the transmission of sound."

LOW INHERENT WEIGHT

In order to transport the building material as efficiently as possible, lifts or cranes are often used at the building site. Because Mepla has a low inherent weight, it is not the end of the world for plumbers if these transport aids are not available. A colleague demonstrates this. Standing on the scaffolding, he hoists a bundle of Mepla pipes up the facade and heaves it through the window in one go, where it is received by a colleague.



←

On the left, the new MasterFix for Mepla screwed on to the male thread MF 1/2" of the elbow tap connector 90° (uninsulated pipe). On the right, the new elbow tap connector 90° connected to a completely insulated drinking water pipe.

ADAPTER WITH OVERTWIST PROTECTION

MEPLAFIX IS NOW CALLED MASTERFIX

Last year, the Geberit MasterFix was introduced for the Geberit Mapress and Geberit PushFit supply systems. Geberit is now also offering the adapter with overtight protection for Geberit Mepla.

Geberit has completely redesigned the MeplaFix and taken over the properties of the MasterFix models for Geberit Mapress and PushFit. This means the Geberit MasterFix for Mepla is also equipped with a union nut with overtight protection. The union nut "skips" as soon as it has been sufficiently tightened, in the same way as when closing a car's fuel tank cap. The integrated overtight protection gives an audible and perceptible signal when the connection to a male thread MF 1/2" is fully established, which makes overtightening and damage caused by excessive tightening impossible.

A blue protective cap protects the fitting against contamination by dirt and dust on the building site. The connection to a male thread MF 1/2" is made without tools and without winding hemp around the threads in advance. Ergonomic recesses on the union nut facilitate tightening using one hand only. Thanks to the new locking technology, the adapter can even be removed if necessary. Incidentally, the new adapters with MasterFix are also available for the Geberit PushFit and Geberit Mapress supply systems.

AVAILABLE FROM 1 JUNE 2019

Geberit Mepla adapter with MasterFix

Geberit Mepla elbow adapter 90° with MasterFix

Geberit Mepla T-piece adapter with MasterFix, throughflow

Geberit Mepla T-piece adapter with MasterFix, branch fitting

GEBERIT ELBOW TAP CONNECTORS 90°

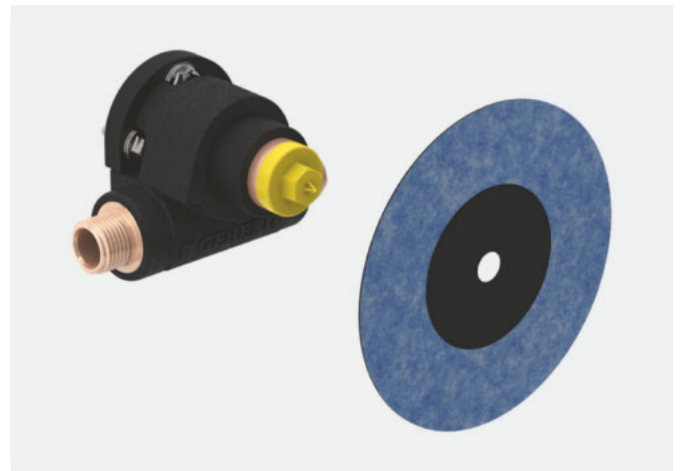
TAP CONNECTIONS MADE EASY

The new elbow tap connectors are designed so that they meet the requirements for sanitary units subjected to heavy use as set out by the respective standard, yet still allow quick and easy installation.

Because the standard stipulates that an elbow tap connector has to have an overhang to the plasterboard of exactly 5 mm, plumbers have previously used a hemp-wound tap extension. The necessary shortening of the tap extension afterwards had to be carried out after the tiling, with the real possibility of surface damage as a result. The new elbow tap connectors from Geberit solve this familiar problem and make standard-compliant installation easier.

Available as a set from 1 June 2019, the elbow tap connector comes with premounted sound insulation, other insulations and pre-plugged screws. This facilitates an easy and quick installation. The insulation shells that come with the elbow tap connectors are designed so that they end flush with the pre-insulated pipes. The slight offset of the elbow tap connector 90° ensures optimal access for the pressing jaws. The three common installation distances of 306 mm, 153 mm and 76 mm can all be implemented on the Geberit Duofix crossbar element for taps. The distances are prepunched on the crossbar and clearly visible. Loop-through installations, which are recommended for drinking water pipes for hygienic reasons, are also easy to implement with the Geberit elbow tap connector 90°.

In combination with the MasterFix adapter, the Geberit elbow tap connector 90° can be combined with the Geberit supply systems Mepla, Mapress and PushFit. It goes without saying that Geberit elbow tap connectors 90° can also be combined with other supply systems. However, in such cases, the threads have to be sealed with hemp.



↑

Thought of everything – the insulation, sound insulation and pre-installed screws are already attached to the new elbow tap connector 90°.

AVAILABLE FROM 1 JUNE 2019

Geberit T-elbow tap connector set 90°
73 mm, offset, with male thread MF ½"

Geberit T-elbow tap connector set 90°
73 mm, straight, with male thread MF ½",
for systems with concealed traps

V&A DUNDEE, UK

THE PRIDE OF SCOTLAND



With V&A Dundee, the Japanese architect Kengo Kuma has created his first building on British soil. The reliable Mapress Stainless Steel supply system is installed in the interior of the design museum.

On 8,500 m², the Scottish subsidiary of London's Victoria and Albert Museum is home to diverse exhibition spaces, studios, a museum shop, a cafe and a restaurant. Since the museum opened in September, the exhibition "Ocean Liners: Speed and Style" has been attracting crowds of visitors as one of the museum's main attractions.

DESIGN AND ENGINEERING

The building, which is located on the bank of the River Tay, consists of two connected, inverted pyramids. As one approaches, the many rows of vertical lines reveal themselves to be slat-shaped concrete elements. Each of these elements weighs up to 4 t. Their varying size gives the building a raw character. According to Kengo Kuma, the cliffs of the nearby North Sea coast inspired him in this regard.

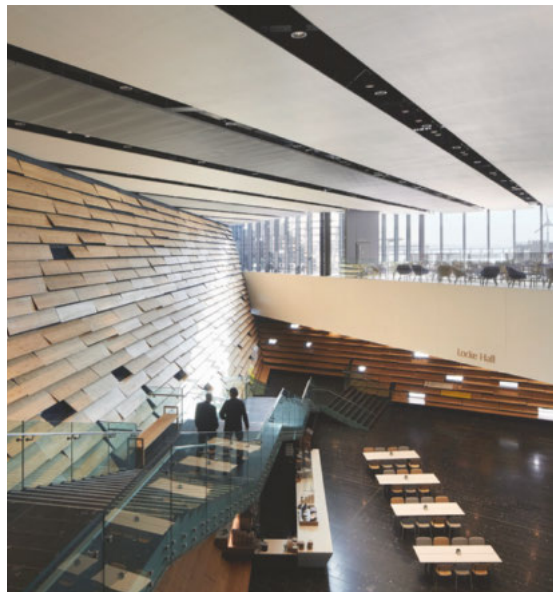
REFERENCE OBJECT



Like a ship from another world:
The V&A Museum in Dundee.

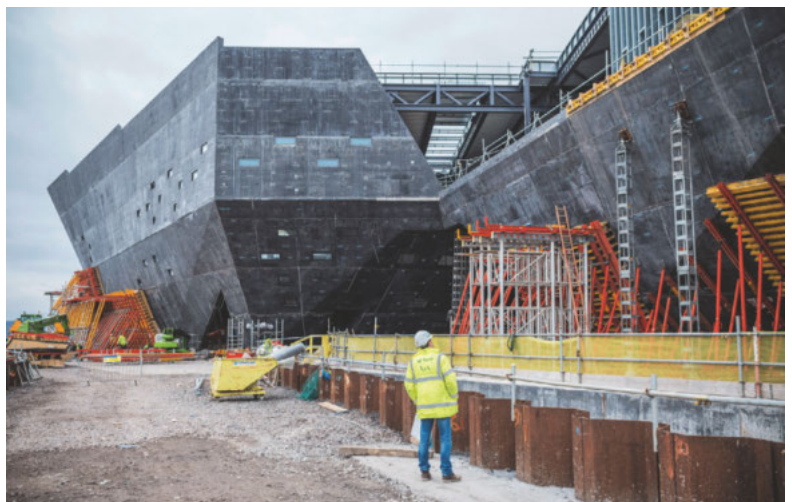
The cleverly orchestrated play of light, shapes and materials makes a visit to this museum an unforgettable experience.

→



Even when it was just a shell, the construction of the museum fascinated onlookers.

↓



Its location on the majestic River Tay with an unobstructed view of the impressive Tay Rail Bridge brings two key sources of inspiration for the museum building into focus – namely the connection between the city and the river, which manifests itself in surprising perspectives when one walks around the building, and the tradition of Scottish engineering prowess, which is reflected in the range of themes on show at the museum.

AN INTERIOR BOASTING MAPRESS STAINLESS STEEL

The Mapress Stainless Steel supply system is installed inside this unmistakable building, which already received a lot of media attention during the construction phase. The pipes and the pressfittings feature a particularly high level of corrosion resistance.

V&A DUNDEE

Building owner: Dundee City Council
Architecture: Kengo Kuma & Associates
Opened: September 2018

GEBERIT PRODUCTS

Duofix installation system
Mapress Stainless Steel supply system

QUESTION TIME

THE FONTENAY, HAMBURG, GERMANY

ARCHITECTURE AND WATER

THE FONTENAY

Building owner:
Klaus-Michael Kühne
Architecture: Störmer Murphy
and Partners, Hamburg
Completed: March 2018

GEBERIT KNOW-HOW

AquaClean Mera Comfort
Sigma80 actuator plate
Duofix installation system
Silent-db20 drainage system
Sigma70 actuator plate
(public areas)
Preda urinal ceramic appliance
(public areas)



The architect Jan Störmer and his team designed the 5-star superior hotel The Fontenay in Hamburg. Thanks to its design featuring three intertwining circles, it blends harmoniously into the park-like property, which is situated in a prime location.



Jan Störmer
Architect

You and your team won the competition for The Fontenay. What was special about this?

The investor had discerning requirements, and the briefing was very detailed. Our design appears to have met the wishes of the building owner, as The Fontenay looks exactly like the plan and proposal we submitted for the competition. This is a rare occurrence and something we are very proud of.

What was the rationale behind the concept?

When designing a hotel, we are guided by the people who will temporarily stay there. In this case, these are discerning holidaymakers and business travellers as well as locals who want to treat themselves to a special day. They should feel comfortable and enjoy the pure beauty of their surroundings.

The ambitions when it comes to comfort are also reflected in the rooms, with each bathroom fitted out with a shower toilet, for example. What is the idea behind this?

I really like shower toilets. In Asia, these are state of the art. We also wanted to offer this comfort to the guests staying at The Fontenay and therefore equipped all the rooms and suites with an AquaClean Mera from Geberit.

What made you opt for the Geberit model?

I love the impressive design language, the sophisticated technology and important details such as the way in which the water flows in the WC ceramic appliance. Water and flowing movements play an important role in the building, and these things fit with this concept. Because details are critical in how harmonious a building looks, we also used other Geberit products.

Such as?

The control panel for the AquaClean Mera and the Sigma80 actuator plate, both of which harmonise with the control elements for light, curtains and ventilation. For the public toilets, we opted for the very similar-looking Sigma70 actuator plate with elegant glass surface. The Geberit Preda urinals impress thanks to their design and concealed technology.

What is your favourite feature in The Fontenay?

Without a doubt, it has to be the atrium with its 200 panes of glass – which create sophisticated lighting moods using programmed lighting scenarios – and the modernly interpreted chandelier that I designed specially for this building.

←

The impressive atrium with the chandelier that Jan Störmer designed specially for the hotel.

→

A look inside the hotel bathroom: the architect was won over by details such as the way in which the water flows in the Geberit AquaClean Mera's ceramic pan.



BRINGING A SMILE INTO THE BATHROOM

GEBERIT SMYLE



The redesigned Geberit bathroom series Smyle has an even more ornate and modern look. The design of the washbasins and furniture is fine-tuned in such a way that individual combinations are possible.

↑

The slightly rounded edges on the handles – which represent a seamless transition from the washbasin to the cabinet – are new. The handles form a unified whole with the narrow rims on the washbasin. To ensure flexibility, Geberit uses a modular furniture concept with diverse combination possibilities. As is standard at Geberit, high-quality materials, coated surfaces and modular elements are used. By revising the furniture's design and functions, Geberit is creating new highlights in the bathroom.

→

Plumbers can mix and match the furniture according to the customer's wishes. For example, the semi-tall cabinets can be combined in different ways and offer a great deal of creative freedom thanks to the option of open or closed storage space. Medium cabinets and low cabinets can therefore be combined in a number of ways. The low cabinet also impresses thanks to its glass shelves and the mirror on the inside of the door. The glass tops also protect the surface against scratches and damage and set design accents in the bathroom.



←

The ceramic sanitary appliances from the Geberit Smyle bathroom series have a very lightweight appearance. Ornate lines, harmonious shapes and narrow rims on the washbasins contrast with the functional inner basins and the generous shelf surfaces at the rear of the washbasin.



→

Geberit adapted the furniture to the form of the ceramic sanitary appliances. The ornate handles with their rounded edges now mirror the contour of the washbasins in terms of their lines and continue their design language. The handles are a matt version of the respective furniture colour; with wood finishes, the handles are the elegant colour lava matt.





Whether a bathroom is for a family, guests or just one person, order and an efficient use of space are the name of the game nowadays.

When it comes to modern bathroom design, the new wall-hung WC is the centre of attention. Thanks to its square design language, it combines perfectly with the square washbasins, and its completely closed outer shape makes it even easier to clean. Geberit offers the WC lids in a slim design, either in a sandwich shape or as an overlapping lid. To ensure exceptional hygiene, the seats can be easily removed for cleaning via the QuickRelease catch.





↑

The new drawer system features a slim design while at the same time offering exceptional creative freedom so that end users can make optimum use of the storage space. With the optional organising boxes, it is easy to flexibly organise the available storage space in the drawers.

→

Geberit Smyle harmonises perfectly with the Option mirror cabinets from Geberit. These mirror cabinets provide plenty of visually appealing storage space whilst also reflecting the light and the room, making the bathroom appear bigger. Option mirror cabinets therefore create brightness and space in a room.

Besides the adjustable glass shelves, extra fixtures include an integrated power socket.





CASA CAMINADA, FÜRSTENAU, SWITZERLAND

NOTHING BUT THE VERY BEST

Thanks to the top chef Andreas Caminada, Schloss Schauenstein has become a prestigious culinary location. Namesake and architect Gion A. Caminada has now expanded the castle ensemble by adding a guest house, which features sanitary technology and bathroom design from Geberit.



Just around the corner from the exquisite Schloss Schauenstein is a hotel with ten rooms featuring minimalist, high-quality furnishings.

“Guests experience something here that they don’t get at a 5-star hotel – the opportunity to chat to the baker, for example.”

Andreas Caminada
Chef



↑

Architect Gion A. Caminada (left) implemented the wishes of the top chef Andreas Caminada perfectly.

There are very few top chefs as highly decorated as Andreas Caminada. The master chef has been celebrating his art at Schloss Schauenstein for around 15 years, with some guests even travelling from afar in order to enjoy the fruits of his craft in an elegant atmosphere.

A PERFECT ADDITION

The Casa Caminada hotel stands proudly right beside the castle and boasts a menu featuring traditional cuisine as opposed to extravagant creations. “We wanted to create something that both guests and locals benefit from in equal measure and where people say, ‘that comes from here’,” explains Andreas Caminada.

NO KITSCH

“That comes from here” applies to both the Casa’s architecture and its food. In Gion A. Caminada, a proven expert in Graubünden’s building heritage was commissioned with the project. He started off with two barns. Although their weathered roof beams and the floors under the roof on which hay used to be dried can be seen in the new building, they are not some kitsch reference, but an expression of a new quality. “At first glance, there should be no indication that this used to be a barn. But it is also clear that one would no longer build in this way nowadays,” explains Gion A. Caminada.

A BAKERY AND A “CABINET OF CURIOSITIES”

With the Casa Caminada, the architect and the chef have implemented a project that not only bears their (accidentally identical) surname, but also represents a matter close to their heart. This is because the conversion not only resulted in a restaurant with accommodation, the building will also eventually house a bakery, meat cellar, cheese cellar and a chamber with all kinds of exquisite delicacies created by Caminada.

→



CASA CAMINADA

Building owner:
Heinrich Schwendener-Stiftung
Architecture: Gion A. Caminada
Opened: May 2019

GEBERIT KNOW-HOW

AquaClean Mera
Sigma20 actuator plate
Duofix installation system
Preda urinal ceramic appliance
Setaplano shower surface
Acanto & Xeno² bathroom series
Mepla & Mapress supply systems
Silent-db20 drainage system

“Many barns have lost their original purpose, which is why we have to rethink them.”

Gion A. Caminada
Architect



The Casa Caminada forgoes symbolic references. Only things that have a tangible benefit were kept.



Every aspect of the rooms was executed with great attention to detail and to exceptional quality standards.



GEBERIT EVERYWHERE

Keeping the barns' original building volume led to all sorts of interesting design anomalies and resulted in none of the ten guest rooms at the Casa Caminada being alike. Although this approach led to the hotel having varied rooms, all the bathrooms are fitted out to the same high standard and feature the best that the sanitary industry has to offer. This includes the AquaClean Mera shower toilet, the Setaplano shower surface and the ceramic sanitary appliances from the Acanto and Xeno² bathroom series.



All the bathrooms are equipped with a Geberit AquaClean Mera shower toilet and a Geberit Setaplano shower surface.

GEBERIT SUPERTUBE TECHNOLOGY

SAVES SPACE AND TIME

With Geberit SuperTube technology, Geberit is offering a sophisticated alternative to the conventional discharge stack layout in high-rise buildings. The main advantage is that a parallel ventilation pipe is no longer required.



The Sovent fitting causes the waste water in the stack to rotate, causing an annular flow with a stable air column up to the first bend.



The BottomTurn bend converts the annular flow into a layered flow without disrupting the air column.



The demand for city apartments is growing at a rapid pace worldwide. Work and living space has become a valuable commodity. It is therefore not surprising that high-rise construction is well and truly booming at the moment. Wherever building owners, architects and sanitary engineers seek to achieve the maximum possible living space, ways of saving space will also be looked for. With Geberit SuperTube technology, substantial space savings can be achieved when it comes to the drainage system.

VENTILATION PIPE NO LONGER NEEDED

With Geberit PE Sovent fittings – which have been used all over the world for several decades – stacks can be built without parallel ventilation pipes because the fittings ensure that the floor pipes are connected to the stack in a hydraulically ideal way. In 2014, Geberit introduced a revised version of the Sovent fitting. The new fitting's flow technology causes the waste water to rotate and presses it against the pipe wall, causing an annular flow with a stable air column. The discharge capacity of the optimised fitting is 30 per cent higher than that of its predecessor. Despite a relatively small diameter of d110, a stack incorporating the new Sovent fittings has an outstanding discharge capacity of 12.0 l/s. By way of comparison: With a conventional building drainage system, a stack in the dimension d160 and a ventilation pipe in the dimension d90 are required in order to achieve such a discharge capacity.

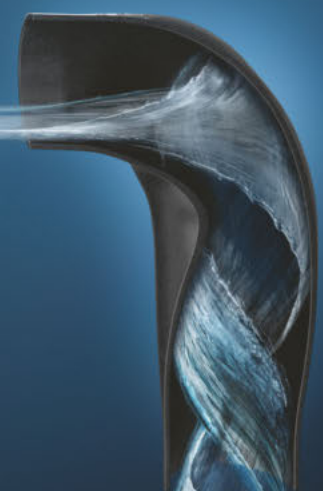
PROBLEM: CHANGE IN DIRECTION IN THE STACK

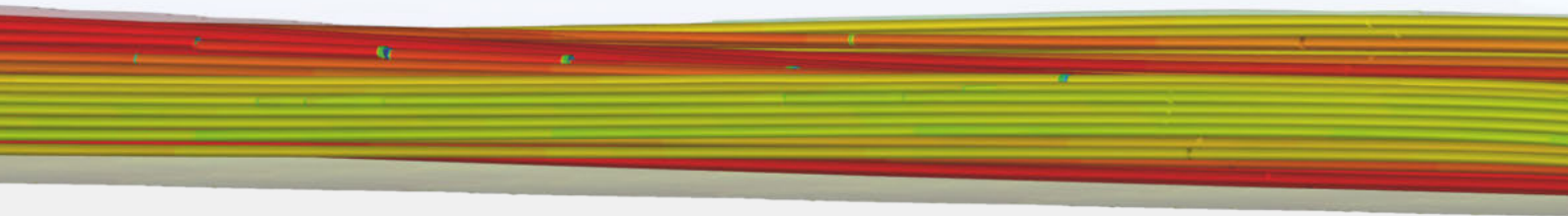
The air column created by the hydraulically optimised fitting remains stable until the first change in direction. As soon as the direction of the stack changes and bended pipe sections are installed, the air column is disrupted. Because the pressure compensation in the stack is no longer ensured, a ventilation pipe has to be installed at such a point. Geberit's flow specialists worked intensively on the hydraulic challenges posed by a change in direction of the stack, which led to the development of Geberit SuperTube technology.

GEBERIT SUPERTUBE TECHNOLOGY

This technology consists of the Sovent fittings described above, the Geberit PE BottomTurn bend and the Geberit PE BackFlip bend. The latter two are completely new developments. They ensure that the air column in a stack is maintained even when there is a change in direction of 90°.

With the help of the BackFlip bend, the waste water is once again guided into an annular flow.





The BottomTurn bend is installed when there is a change in direction from vertical to horizontal. The flow divider in the bended pipe section ensures that the annular flow in the stack is converted into a layered flow before the change in direction. Thanks to this process, the air column is also maintained in a horizontal pipe section. The water is then once again guided into an annular flow by the BackFlip bend. Its shape gives the waste water the required swirl so that it is once again converted into an annular flow without disrupting the air column.

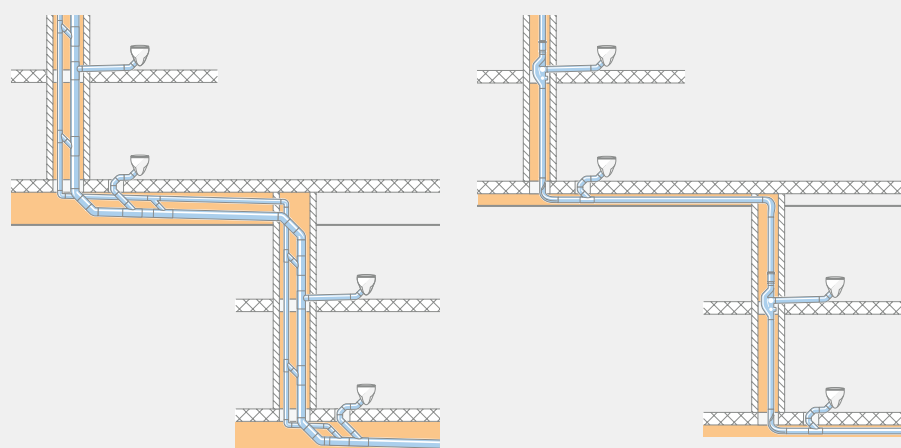
SPACE-SAVING DRAINAGE SYSTEM

Geberit SuperTube technology visibly creates space – both in the vertical stack and in a horizontal offset. With SuperTube technology, the ventilation pipe that was previously required when there were changes in direction in stacks has become redundant. By using smaller pipe diameters and omitting ventilation pipes, the pipe ducts can have smaller dimensions. After a direction change to the horizontal, the pipe can be installed with a length of up to 6 m without any slope whatsoever, which represents yet another benefit. This means that the ceiling suspension can be attached very close to the concrete ceiling. This facilitates a more efficient

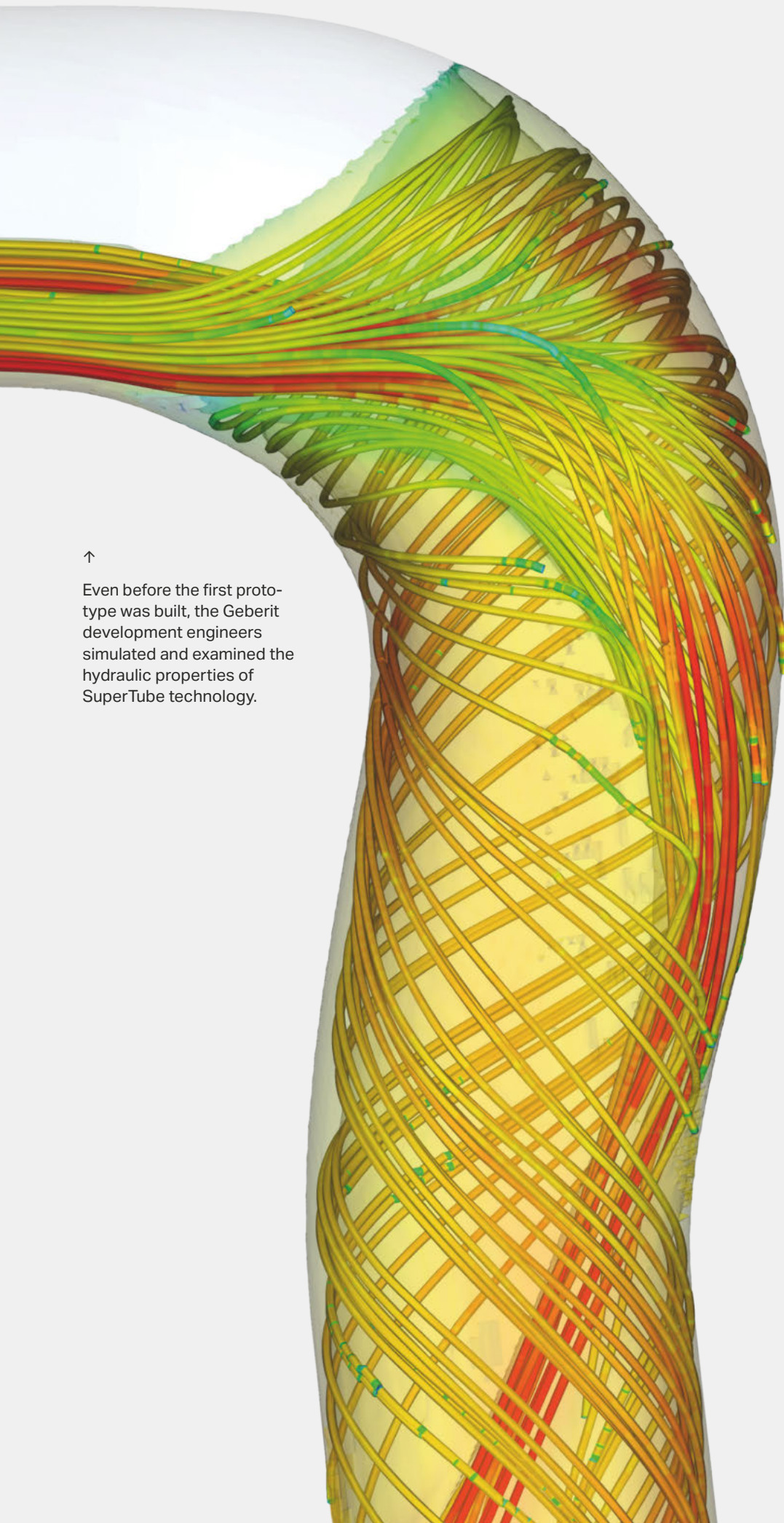
planning of room heights. The space gained by using Geberit SuperTube technology can then be put to better use when planning the living space.

MINIMISING EFFORT

With Geberit SuperTube technology, even the planning and installation effort is reduced, as the drainage system can be implemented with just a single stack. This has compelling benefits for both sanitary engineers and plumbers. For example, it makes planning the building drainage much easier. And thanks to the omission of the ventilation pipe and the use of smaller pipe dimensions, the plumber requires less pipe material and speedy progress on the building site is possible.



← On the left, a conventional drainage system. On the right, a system using SuperTube technology. Thanks to the omission of the ventilation pipe, a great deal of space can be saved.



Even before the first prototype was built, the Geberit development engineers simulated and examined the hydraulic properties of SuperTube technology.

In addition to Geberit PE pipes, a stack with SuperTube technology also includes the following components: Sovent fittings for the floor connection, BottomTurn and BackFlip bends for all offsets in the pipe layout.



STABLE AIR COLUMN

In advance of the product launch, the new Geberit SuperTube technology was thoroughly tested at a test set-up at the production site in Rapperswil-Jona (CH).



↑

In order to simulate a stack in a high-rise building, the test set-up was extended into the basement of the sanitary technology laboratory.



↑

In Geberit's sanitary technology laboratory, the performance parameters of the SuperTube system are compared with those seen in a conventional drainage system.

The 15-m-tall structure that soared into the sky above the production building until the end of 2018 was part of a 30-m-tall test set-up that extended deep into the basement. It was used to simulate the waste water hydraulics in a stack with a horizontal offset of several metres in length. Geberit's sanitary technology laboratory used this to put the SuperTube technology through its paces. In high-rise buildings, the discharge stacks do not always just run vertically. Sometimes, a hotel lobby or restaurant, for example, has to be circumnavigated with a horizontal offset.

"With SuperTube technology, we dispense with the installation of an additional ventilation pipe, even when there is an offset. It must be possible to compensate for the pressure conditions in the pipe so that traps are not sucked or blown dry," explains Rolf Weiss, development engineer at Geberit. "The air column therefore also must not collapse in the horizontal pipe section." Generating a stable and continuous air column was a challenge that the engineers had to overcome. The real tests now confirm what they had calculated in the computer simulations – the air column also remained stable in the horizontal offset under all test conditions.

The test set-up on the roof of the production building in Rapperswil-Jona (CH) features a conventional stack with ventilation pipe and, directly next to it, a stack implemented with SuperTube technology.



THE LARGE-SCALE BELGRADE WATERFRONT
CONSTRUCTION PROJECT

LIGHTHOUSE PROJECT



BELGRADE WATERFRONT PROJECT

Location: Belgrade, Serbia

Total investment: 3 billion US dollars

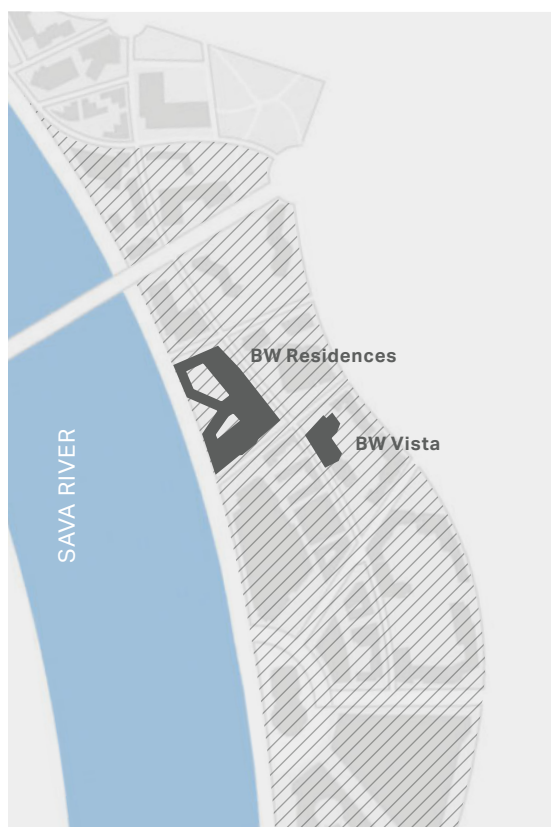
Scope: 8 hotels, 5,700 residential units as well as shopping facilities and office space

Special features: largest shopping centre in Europe

Future number of inhabitants: approx. 14,000

An unobstructed view of the Sava River – it's not for nothing that this immense construction project is called Belgrade Waterfront.

Living, working and leisure – all in one place. While nothing new in and of itself, the dimensions of the master plan for Belgrade Waterfront – one of the largest building sites in Europe – are not exactly run of the mill. The Geberit PE Sovent fitting plays an important role here when it comes to draining the high-rise buildings.



↑

In the coming years, Belgrade Waterfront will feature several apartment buildings, hotels and Europe's largest shopping centre. The two apartment buildings BW Residences have already been completed. BW Vista is currently under construction.

Over the next few years, a completely new district will be created on the southern bank of the picturesque Sava River: Belgrade Waterfront, an urban project boasting an impressive 180 ha of residential and office space. In addition to 5,700 apartments, 2,200 hotel rooms and office space for around 12,700 people are also planned. The building owners promise that when the Belgrade Waterfront project is completed, it will permanently change the Serbian capital's cityscape.

CHALLENGE OF CREATING MORE SPACE

The handing over of the BW Residences – the first Belgrade Waterfront residential project to be completed – to their new occupants in June 2018 represented a first highlight. It is now being joined by a new building site located diagonally across from it – BW Vista. The 228 apartments being built here are in the immediate vicinity of the newly designed promenade along the bank of the river. In addition to other planned housing complexes, a large park, luxury hotels and the largest shopping centre in Europe will also adorn the immediate neighbourhood.

Although BW Vista's concrete structure has already reached its final height of 82 m, work on the interior of the 23-storey complex is set to run until mid-2019. The pipes – of all things – posed the sanitary engineers a challenge. "Because of the spacious bathroom floor plans, we had to make the pipe ducts as small as possible," explains Dragana Radosavljević, a building planner for Mašinoprojekt Koprivica a.d. A look at the current prices per square metre in Belgrade reveals why optimal use of the living space was a key requirement for the investors. "The prices for apartments range from 3,000 to 4,000 euros per m²," adds Dragana Radosavljević. →

→
Thanks to good preparatory work,
the installation of the stacks in
the pipe ducts is progressing rap-
idly.



↑
A particularly good solution for the
drainage of high-rise buildings:
Geberit Sovent fittings render an addi-
tional ventilation pipe unnecessary.

CONTINUOUS COLUMN OF AIR

When it came to the discharge stacks, a solution was therefore sought that saves space and is also very powerful. The sanitary engineers found what they were looking for in a Geberit product that has made a name for itself since its market launch in 2014 – the hydraulically optimised fitting Geberit PE Sovent. It facilitates an optimal layout of stacks in high-rise buildings. The fitting's flow technology causes the waste water to rotate. It is pressed against the pipe wall, causing an annular flow with a stable, continuous air column. This ensures the automatic compensation of differences in pressure in the pipe and renders the installation of a parallel ventilation pipe unnecessary. Another advantage is that while conventional drainage systems mostly use pipe diameters of d160, a similarly high discharge capacity of up to 12 l/s can be achieved with Geberit PE Sovent and pipe diameters of just d100. The smaller pipes are not just easier to install, they also save additional space.



The individual pipe sections are prepared with high precision in the basement of the building shell.

RELIABLE PARTNER

Considering around 30 stacks are planned for BW Vista, the overall space savings in the pipe ducts resulting from the omission of the ventilation pipes is considerable. In addition to the space problem, Geberit PE Sovent also solves another issue on the building site. The plumbers from the company Traco-Invest have to install substantially less material. With such an extensive construction project and tight schedules, this simplifies things greatly.

Because the plumbers had never installed Geberit PE Sovent before, Aleksandar Šutić, a technical advisor at Geberit Serbia, lent his support. "The technical support on site was very useful," says Aleksandar Tabaković from Traco-Invest with conviction. "Having never installed a stack without a ventilation pipe before, we greatly appreciated having a direct contact in Aleksandar who was able to expertly answer all our questions." Aleksandar Šutić started off by setting up a few work areas on the underground floor and showed the plumbers how to properly weld PE pipes using buttwelding tools. "After the first training sessions, we offered additional training on how to properly install PE Sovent fittings," says a visibly pleased Aleksandar

Šutić. With their newly acquired knowledge, the plumbers set to work. The initial effort paid off. The installation process was sped up a great deal, which in turn contributed to the deadlines in the tight schedule being met without any problems.

SOVENT – A SUCCESS STORY

In addition to BW Vista, six other high-rise buildings are also being built as part of the Belgrade Waterfront construction project in the coming years—all equipped with Geberit PE Sovent. The sanitary engineers used Geberit PE Sovent for drainage throughout the already completed BW Residences. Around 5,000 fittings will be installed by the time the last building is completed.

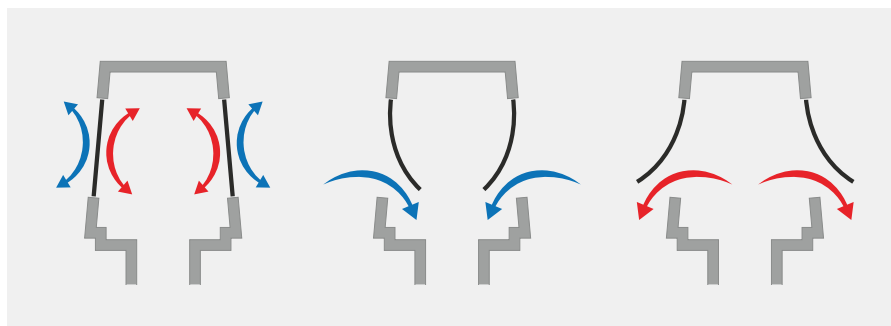
THE GEBERIT ENERGY-RETAINING VALVE

IMPROVING THE ENERGY EFFICIENCY



←

The Geberit energy-retaining valve closes the openings on drainage pipes without affecting their functionality.



↑
When no water flows, energy losses are prevented by the closed diaphragms.

↑
In the event of negative pressure (e.g. when the toilet is flushed), the diaphragms open and air flows into the system.

↑
Excessive overpressure caused by the sewage system is also compensated for by the diaphragms opening.

To counteract the energy loss of the ventilation pipe installed through the roof, Geberit has developed the energy-retaining valve (ERV). It retains the energy in the pipe without restricting the functionality of the ventilation.

In order to compensate for the rapidly changing pressure conditions in stacks, a ventilation solution with an unimpeded flow of air is required. The pressure compensation is generally ensured by incoming air using a separate ventilation pipe installed through the roof.

UNCONTROLLED HEAT LOSS

However, this creates an energy-related weakness, in that heat is able to escape unchecked through the open-end piece on the ventilation pipe. Verified calculations from the Lucerne University of Applied Sciences and Arts (CH) have revealed that such openings can lead to a significant energy loss. This energy loss occurs whenever cold air removes energy from the building when flowing through the stack.

ENERGY EFFICIENTLY RETAINED

With the launch of the ERV, Geberit offers a patented solution that reduces energy loss via the stack without restricting the functionality of the ventilation pipe. How exactly does it work? The ERV is fixed on top of the ventilation pipe installed through the roof. The valve itself has flaps featuring maintenance-free and weather-resistant silicone diaphragms. These diaphragms open automatically when pressure compensation is required and they remain closed the rest of the time. The diaphragms therefore open inwards and outwards, depending on the situation. This happens when negative pressure develops in the stack or overpressure has to be compensated for.

Thanks to a sophisticated clip-on installation solution – which is suitable for all common ventilation pipes with the dimension d110 – installing the ERV couldn't be any easier. Provided the ventilation pipe can be easily accessed, installation can be taken care of in next to no time and can be carried out by a plumber, roofer or the property's facility manager.

WEATHER-RESISTANT

Once installed, the ERV can withstand typical environmental and weather conditions. The maintenance-free silicone diaphragms are frost-proof. Once installed, cleaning is not required thanks to an integrated grating that protects against insects and leaves. During a hail resistance test conducted at the Swiss Federal Laboratories for Materials Science and Technology, the ERV attained class 4 – the second-highest classification. It is also stormproof. The ERV also prevents unpleasant odours from escaping the ventilation pipe – a pleasant additional benefit for people with roof terraces.



Norbert Cuhat teaches how plastic is correctly processed.

SHARING KNOWLEDGE

"ABSOLUTELY UNIQUE"

Geberit has been supporting the Swiss development organisation Helvetas for almost a decade. The goal of the latest joint project is to promote the transfer of knowledge in developing countries. To this end, two technical advisors from Geberit Switzerland travelled to Mozambique in autumn 2018.

SHARED VISION

Geberit and Helvetas share a common vision, namely to provide as many people as possible worldwide with access to clean drinking water and basic sanitation. Young people in developing countries receiving vocational training and thus also being able to earn their own income is an important prerequisite in achieving this goal.

The Mozambique project is one of several projects of this kind that Geberit has carried out in close cooperation with Helvetas.

Geberit has been supporting the Swiss development organisation Helvetas for almost a decade. The goal of the latest joint project is to promote the transfer of knowledge in developing countries. To this end, two technical advisors from Geberit Switzerland travelled to Mozambique in autumn 2018.

WELL PREPARED

The two Geberit technical advisors Kerstine Kohler and Norbert Cuhat spent two weeks passing on their knowledge to the trainers in Nampula and instructing them in the practical work. "The trainers at the vocational school are highly motivated and really want to learn," explains Kerstine Kohler, who works as a technical advisor at Geberit Vertriebs AG in Lausanne (CH). With their acquired knowledge, the trainers are now able to carry out hands-on training themselves and therefore prepare the young people for their future work.

A LONG-TERM FOCUS

The goal of the project assignment – which was initiated jointly by Helvetas and Geberit – is to promote the transfer of knowledge in developing countries. In this project, Helvetas is using a performance-based financing model that has already proved successful in Nepal and Ethiopia. The long-term goal is for the vocational education and training programme to be extended to other regions of Mozambique and become part of the national education strategy.

A second, similar assignment saw two other technical advisors travel to Nepal at the end of November 2018, where they supported local manufacturers of water filters so that they themselves can carry out a simple quality assurance process.

"The assignment was an absolutely unique experience for me. If I had the chance, I would travel to Mozambique again tomorrow."

Kerstine Kohler
Technical advisor Geberit Vertriebs AG,
Lausanne (CH)



↑
The three course participants listen carefully to Kerstine Kohler's instructions.



↑
Diploma ceremony: the trainer passed the course with flying colours.

Geberit Sales Ltd
Geberit House
Edgehill Drive
Warwick
CV34 6NH

T: 0800 032 9629
enquiries@geberit.co.uk

www.geberit.co.uk

