

EVERYTHING AFFORDABLE HOUSING



WHY CHOOSE TWYFORD FOR YOUR AFFORDABLE PROJECT

For over 160 years Twyford has led the way in bathroom innovation creating products that continually move bathroom design forward. Committed to lasting quality with 25 year guarantees on all ceramic products, Twyford is a successful and respected brand to trust. Since 2015 Twyford has been part of the Geberit Group, European leader in the field of sanitary products.

As a market leader in the affordable housing sector, our knowledge of what works in any social housing context gives us a greater understanding of your needs, so from day one, your dedicated account manager will ensure that your project runs smoothly.

Because we understand that product durability and stock continuity are key to fulfilling your housing targets and maintenance obligations, you'll find us responsive and proactive, controlling all aspects of production, planning and delivering exceptional spare parts availability.

We also provide unrivalled logistical support and installer training, advising on everything from bathroom safety to reliable pipework connections.

And because we also understand that tenants' needs can be complex, our expertise covers all abilities, providing Doc.M packs for the less able, stainless steel baths and anti-vandal solutions.

This unique level of understanding is the reason why today, we're trusted by social housing providers all over the UK.

Twyford
Classic
P. 05



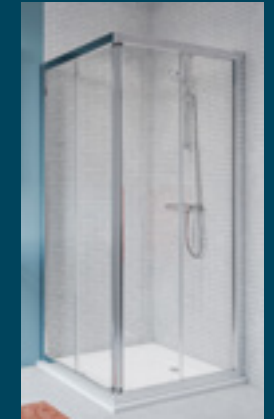
Twyford
Option
P. 06



Twyford
Alcona
P. 08



Twyford
Showering
P. 12



Twyford
Bathing
P. 14



Twyford
Brassware
P. 16



Twyford
DOC.M
P. 18

Support
P. 20

Our Guarantee
P. 21

Notes
P. 22

Contact details
Back cover

MEET THE TEAM

As a market leader in the affordable housing sector, our knowledge of what works in any social housing context gives us a greater understanding of your needs, so from day one, your dedicated account manager will ensure that your project runs smoothly

For affordable bathrooms solutions on social housing projects, our specialised sales team, Ian & Tony are here to help.



Ian Doherty
Key Account Manager - North
ian.doherty@geberit.com

For over 20 years I worked within the public sector in both Housing and Health which developed my understanding of Social Housing needs and requirements before joining Geberit in March 2018 where I have focused on the Social and Affordable housing sector.



Tony Price
Key Account Manager – South
tony.price@geberit.com

I have worked for Twyford Bathrooms and Geberit since October 2003, working in various areas including Commercial & Eco Ceramics. For the last few years I have had a Sole focus on Social and Affordable Housing, being able to support, Identify and Specify the needs of the Customer in all Bathroom areas. Prior to this I worked for a National Plumbing and Heating Merchant for 15 years.

TWYFORD

CLASSIC

Used extensively on refurbishment projects where existing supply points are fixed and cannot be altered, the classic toilet and cistern options provide the flexibility to cover a whole range of installation requirements.

Our unique Total Install® system makes installation of toilets and bathroom fittings quicker and simpler than ever before. Giving a perfect and professional finish to every job.



Washbasin
560mm
2 tap holes



Low level washdown WC suite, horizontal outlet



WC bowl
- horizontal outlet
- fixed P trap
- fixed S trap



TWYFORD

OPTION

Option provides a series of fully adaptable and durable products that are not only affordable, but offer stylish bathroom solutions for tenants too.

Choose from a wide range of flexible products such as a lever cistern toilet or opt for a water saving dual flush. Our handrinse washbasin will maximise a smaller bathroom, or you can choose a larger basin allowing you to adapt to the space available.



Toilet Suite Push
Button Cistern



Toilet Suite
Lever Cistern



550mm
Washbasin

TWYFORD

ALCONA



The Alcona bathroom range offers a versatile and classic design to suit all your tenants needs.

This durable bathroom series features a comprehensive range of toilets to suit all applications including a dual flush close coupled toilet, fully back-to-wall and wall-hung - both compatible with Geberit Duofix Frames.

Alcona now offers a choice of both round and square washbasins suiting any bathroom design.

The entire Alcona toilet range features Twyford's water saving flushwise® as standard. Washbasins range from 350mm to 600mm and come with a full or semi pedestal.



Close coupled with horizontal & vertical outlets



Back to wall with horizontal outlet



Wall-hung with horizontal outlet



400, 500, 550 & 600 round basin (1TH & 2TH)



Washbasin 400, 550, 600mm (Available With Full or Semi Pedestal)



400, 500 600 square basin (1TH only)



TWYFORD

ALCONA



350 round corner basin (1TH only)



560 round countertop basin (1TH only)



Round semi pedestal only



Round & square full pedestals



500 & 600 ceramic shelves





SHOWERING

Twyford offers a wide range of showering solutions from trays to mixers, providing the perfect combination of great value and quality for your affordable housing project.



SQUARE FLAT TOP TRAY
760 x 760mm
800 x 800mm
900 x 900mm
1000 x 1000mm



RECTANGLE FLAT TOP TRAY
900 x 760mm, 1000 x 760mm,
1000 x 800mm, 1100 x 800mm,
1200 x 760mm, 1200 x 800mm,
1200 x 900mm, 1400 x 900mm,
1500 x 800mm, 1600 x 800mm,
1700 x 700mm, 1700 x 750mm,
1700 x 800mm



QUADRANT FLAT TOP TRAY
800mm
900mm
1000mm



SQUARE UPSTAND TRAY
760 x 760mm
800 x 800mm
900 x 900mm



RECTANGLE UPSTAND TRAY
900 x 760mm, 1000 x 760mm,
1000 x 800mm, 1200 x 760mm,
1200 x 800mm, 1400 x 900mm,
1700 x 750mm



QUADRANT UPSTAND TRAY
800mm
900mm



**SOLA
SHOWER RAIL,
HOSE AND HEAD**



**THERMOSTATIC
SHOWER BAR VALVE**

DURABLE BATHING SOLUTIONS

Twyford's range of porcelain enamelled steel and acrylic baths offer a durable and long lasting solution suitable for over bath showering and high use environments. Available with a slip resistant base and chrome handles for safer bathing as well as low volume to reduce water usage by up to 35%. Twyford's Celtic and Opal ranges are the perfect bathing solution for social housing tenants.

- Enamelled to BS1344
- Available with 0 or 2 taps holes
- Suitable for a fixed bath screen for showering over bath
- Series of bath panels also available



CELTIC
1500mm x 700mm, 1600mm x 700mm,
1700 x 700mm (low capacity option available)



OPAL
1700 x 700mm
(Space saving for smaller bathrooms 1500 x 700)
Available with or without grips



OPAL TREAD
1700 x 700 / 1500 x 700
Soft tread pattern covers full length of base
(low capacity option available)

UNIVERSAL BATH PANELS

Twyford offer various types and sizes of bath panels to match all your requirements - some of our baths come with dedicated bath panels, see previous pages. The baths panels below are universal so can complement any bath without a dedicated panel. Twyford bath panels come in a number of different shapes and materials to complement any bathroom design.



ENDURANCE
Front panel 1700mm
End panel 700 / 750mm



GALERIE CALLISTO
Front panel up to 1700 / 1500mm
End panel up to 700mm



NEPTUNE
Front panel 1700 / 1500mm



OMNIFIT
Front panel 1700 / 1524mm
End panel up to 800mm

TWYFORD X52 TAPS

PRACTICAL DESIGN, AFFORDABILITY AND QUALITY

Our extensive range of X52 taps and mixers offers high quality, contemporary styled solutions at competitive prices for washbasins, baths and showers. Every tap features an attractive modern design with solid brass composition casting, ceramic cartridges and chrome plating (to BS EN428) to ensure functionality, safety and durability for your tenants.

- All products are made from WRAS approved material to meet water regulations
- All products are suitable for both high and low water pressure



X52 BASIN MONO MIXER



X52 BATH FILLER



X52 BATH/SHOWER FILLER



DOC M

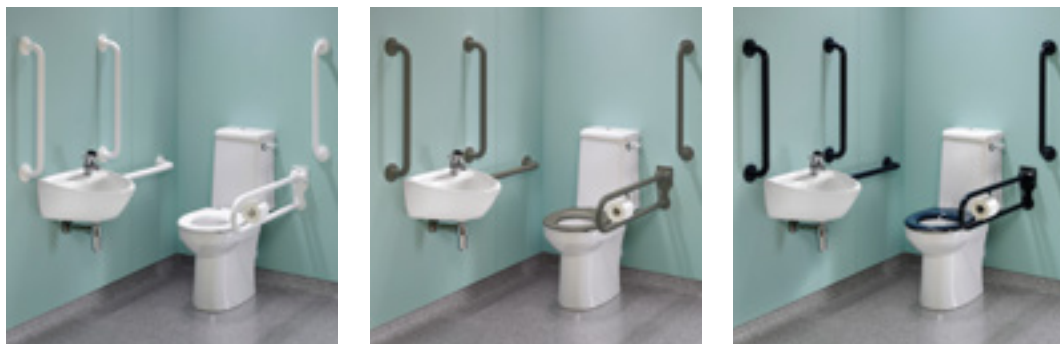
MAKING HOUSING TOTALLY ACCESSIBLE

With Doc.M rimless packs, robust grab rails, raised height toilets, long projection toilets and accessible washbasins, if there's anything we can do to help, you'll find it in our range.

DOC.M RIMLESS SUPER PACK

- Modern rimless design
- 4 or 6 litre flush

Available in different colours



The products included in the set and the layout details are in accordance with those laid down in the building regulations 2003 approved Document M effective from 1st May 2004

Comprising Components

- Avalon Rimless HO pan and fixings
- Avalon Rimless cistern, fittings and spatula lever - 4 or 6 litre flush
- Avalon seat ring, stainless steel bar hinge, top fix and stability buffers
- Hand rinse - 1 tap hole medical basin
- Thermostatic mixing tap TMV3 (SF1 138CP)
- 5 Avalon support rails with concealed fixings
- Avalon hinged support rail and toilet roll holder
- Wall bolts (pair)
- Grid waste
- Cistern cover clips

Please note basin traps to be ordered separately.



SUPPORT

DEDICATED TEAM

From planning to logistics to stock availability and aftersales, we're exceeding expectations to offer you a wide range of products to suit any development. At Geberit, we have a dedicated team in place to support your affordable housing project from start to finish.

TRAINING

Geberit provide a free, comprehensive CIPHE accredited training day. This can be provided for all installers including sub contractors and apprentices. With a choice of visiting the Warwick Training Academy or delivery of the training on site, the program offers flexibility to suit your needs.

- Free training day including breakfast and lunch
- Training certification
- Onsite or head office training sessions (depending on the size of the project)



OUR GUARANTEE

LIFETIME
guarantee

- 1.1** This product guarantee is given by Geberit Sales Ltd (a company registered in England and Wales with company number 06142557 with its registered address at Geberit House, Edgehill Drive, Warwick, England, CV34 6NH) and applies to Geberit products purchased within the United Kingdom (guarantee area).
- 1.2** Consumers have statutory rights under the laws of England and Wales in relation to the sale and purchase of goods, and these statutory rights shall not be adversely affected by this guarantee.
- 1.3** Geberit guarantees that on purchase by the customer of a Geberit product, and for a period of 12 months from the date of purchase (or such other period as set out in paragraph 2 – 4 below) (guarantee period), the products shall:
 - 1.3.1** conform in all material respects with their description;
 - 1.3.2** be free from material defects in design, material and workmanship;
 - 1.3.3** be of satisfactory quality (within the meaning of the Consumer Rights Act 2015); and
 - 1.3.4** be fit for any purpose held out by Geberit.
- 1.4** Subject to paragraph 1.5, if:
 - 1.4.1** the customer gives notice in writing to Geberit (either by email to technical@geberit.co.uk or by letter to its registered address) during the guarantee period and within a reasonable time of discovery that some or all of the products do not comply with the guarantee set out in paragraph 1.3.
 - 1.4.2** Geberit is given a reasonable opportunity of examining such products; and
 - 1.4.3** the customer (if asked to do so by Geberit) returns such products to Geberit's place of business at the customer's cost, Geberit shall, at its option, repair or replace the defective products, or refund the price of the defective products in full.
- 1.5** Geberit shall not be liable for any products' failure to comply with the guarantee set out in paragraph 1.3 in any of the following events:
 - 1.5.1** the customer makes any further use of such products after giving notice in accordance with paragraph 1.4;
 - 1.5.2** the defect arises because the customer failed to follow Geberit's oral or written instructions as to the storage, commissioning, installation, use and maintenance of the products or (if there are none) good trade practice regarding the same;
 - 1.5.3** the defect arises as a result of Geberit following any drawing, design or specification supplied by the customer;
 - 1.5.4** the customer alters or repairs such products without the written consent of Geberit;
 - 1.5.5** the defect arises as a result of fair wear and tear, wilful damage, negligence, or abnormal storage or working conditions;
 - 1.5.6** with applicable statutory or regulatory requirements.
- 1.6** The events in paragraph 1.5 above shall apply to any repaired or replacement products supplied by Geberit.
- 1.7** Except as provided in this paragraph 1, Geberit shall have no liability to the customer in respect of the products' failure to comply with the guarantee set out in paragraph 1.3.

NOTES

Geberit Sales Ltd
Geberit House
Edgehill Drive
Warwick
CV34 6NH

T +44 (0) 1926 516800
F +44 (0) 1926 400101
E enquiries@geberit.co.uk

Literature 0800 007 5133

twyfordbathrooms.com